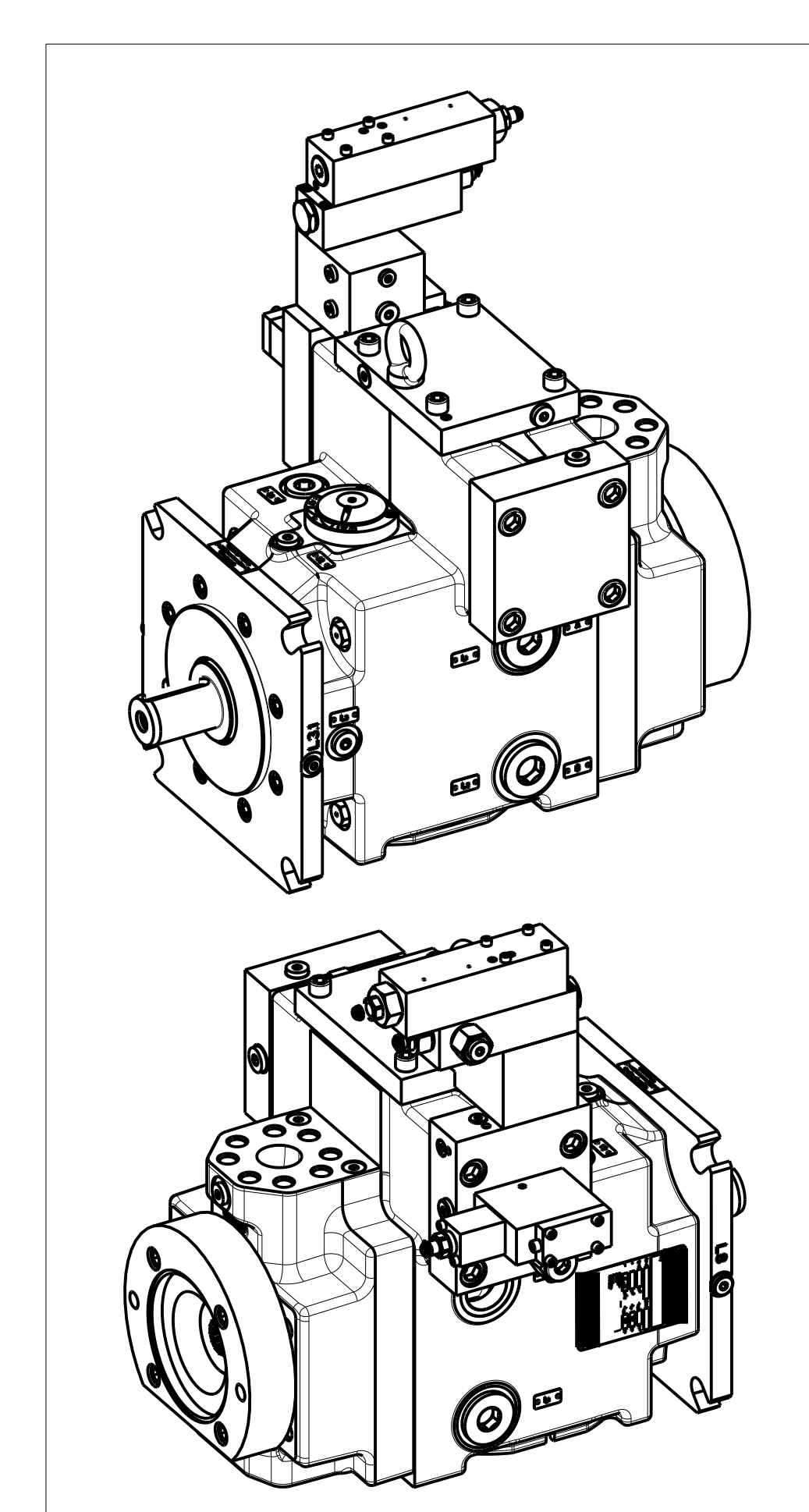
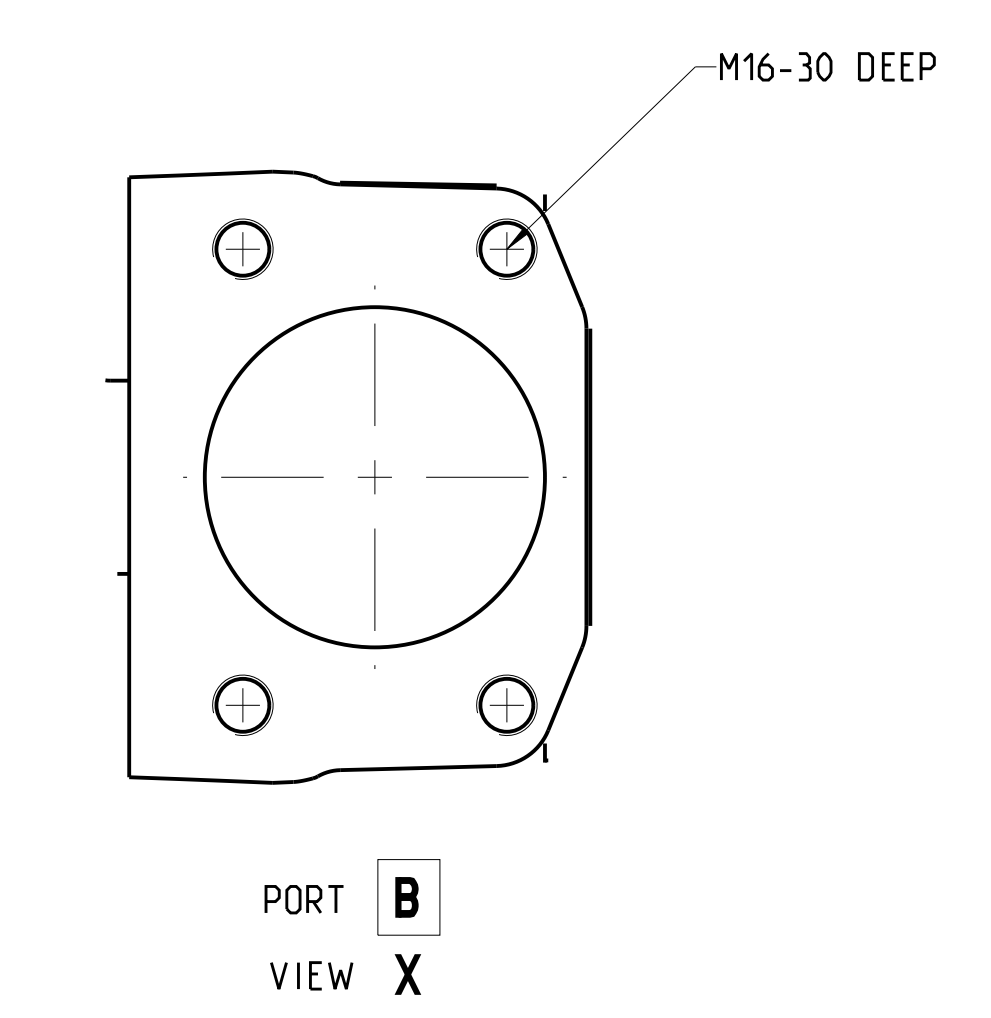
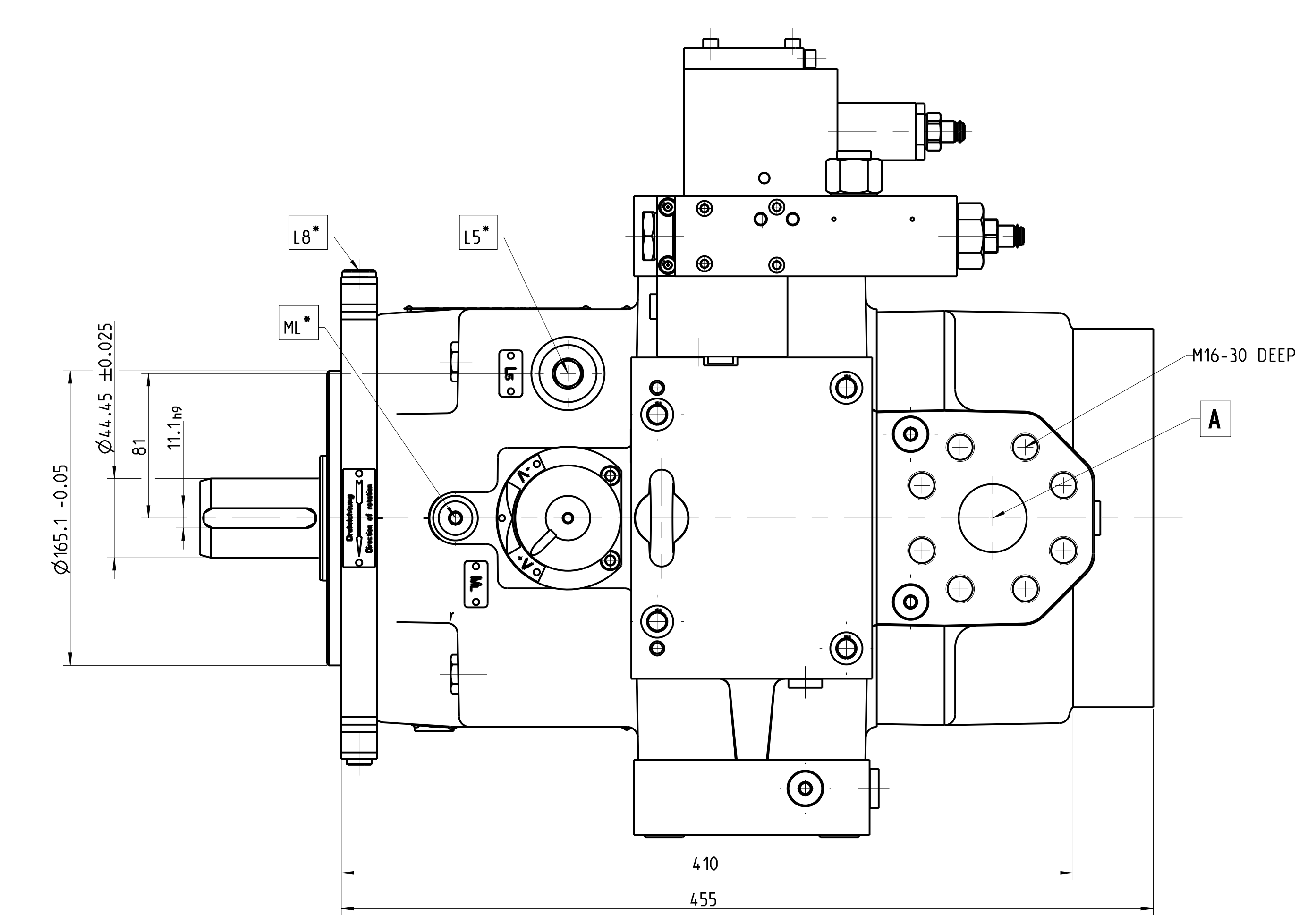
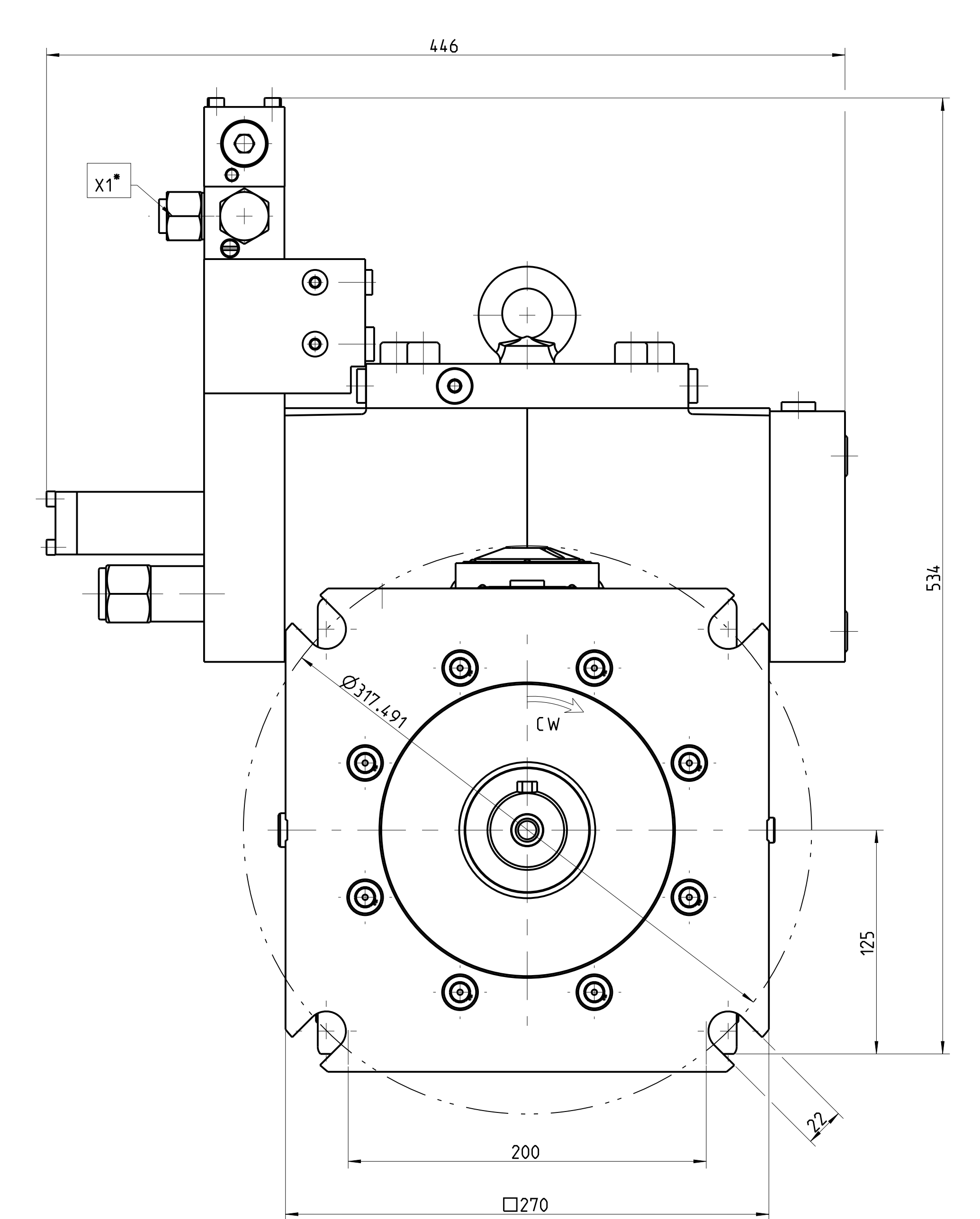
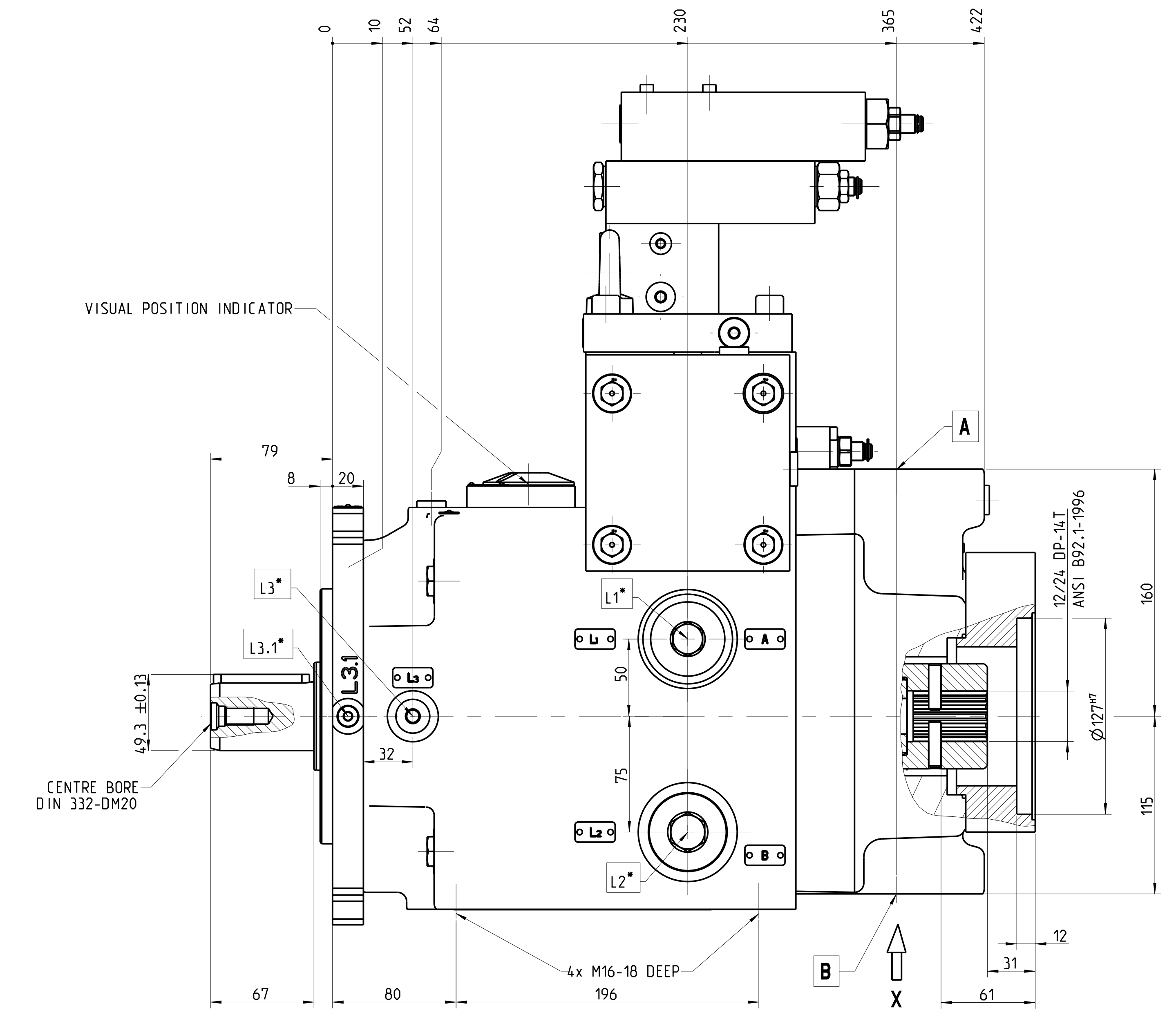
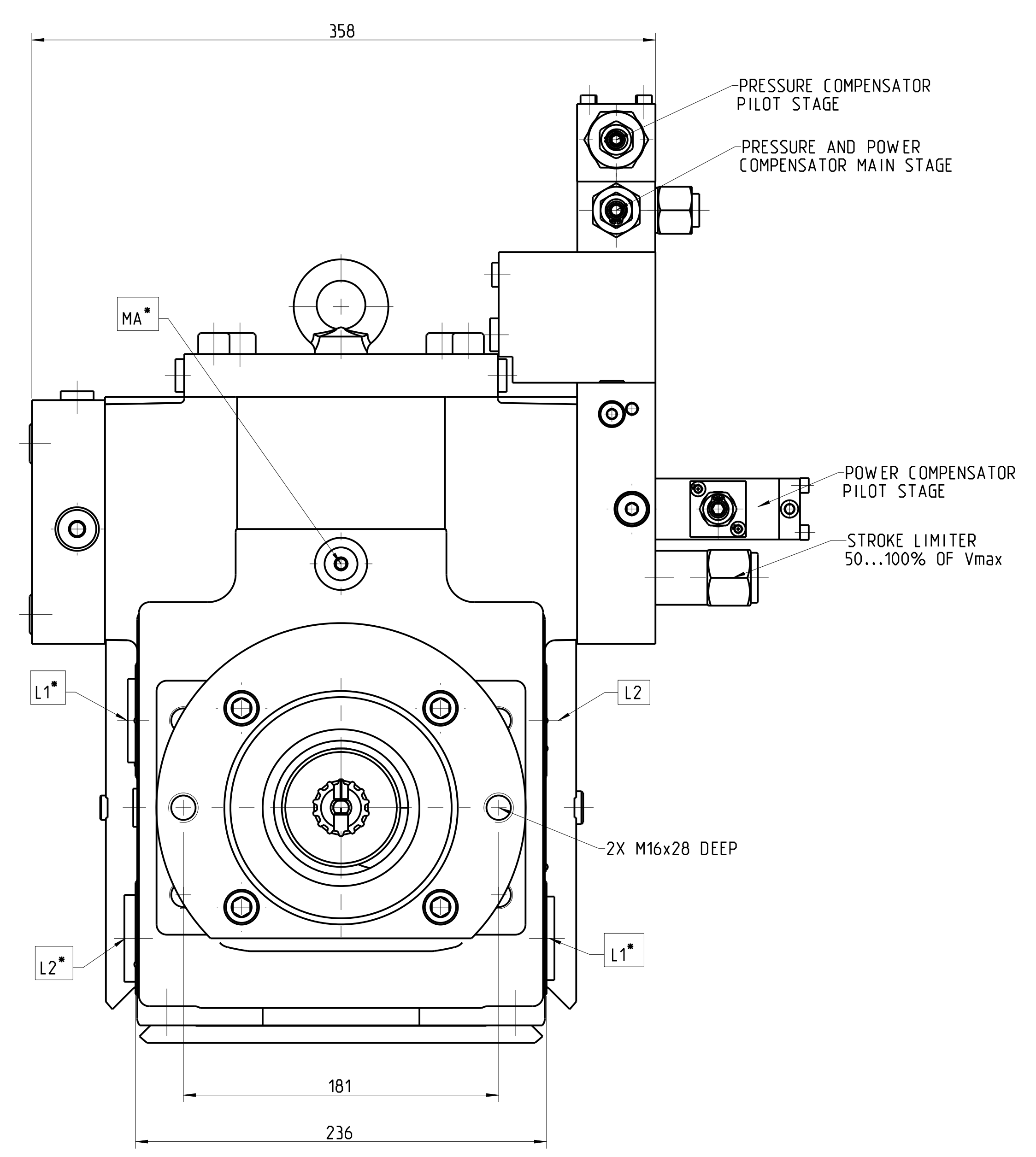


REVISIONS			
REV.	DESCRIPTION	DATE	DRAWN APPR.
D	REDRAWN ON PROVE ZIADAPTER CHANGED	2010-05-07	- HANGAD
G	HC-2021-109-MO-CO-REACTIVATED	080x121	T.M. P.V.



- A SYSTEM PRESSURE PORT ISO 6162-2 P38M (SAE J518 CODE 62 - 1 1/2" - 6000 PSI)
- B INLET PRESSURE PORT ISO 6162-1 P89M (SAE J518 CODE 61 - 3 1/2" - 500 PSI)
- L1 DRAIN PORT 1 5/8"-12 UNF-2B (ACCORDING TO MOUNTING POSITION USE UPPER PORT)
- L2 DRAIN PORT G 1 1/4" (ACCORDING TO MOUNTING POSITION USE UPPER PORT)
- L3 VENTILATION PORT FOR VERTICAL MOUNTING G 3/8"(SHAFT UPWARD)
- L3.1 PORT G 1/8"
- L5 OIL FILLING PLUG 1 1/16"-12 UN-2B
- L8 AIR BLEEDING PORT G 1/4"
- MA GAUGE PORT SYSTEM PRESSURE G 1/4"
- ML GAUGE PORT CASE PRESSURE G 1/4"
- X1 REMOTE PORT PRESSURE COMPENSATOR, G 1/4" - 12.5 DEEP
- ... CONNECTION WITH PLUG.

DIRECTION OF ROTATION	CONTROL	INPUT	OUTPUT
RIGHT HAND ROTATION	TO -V _{MAX}	B	A

PVW S-250M0E00C IRE 1SVVALR000A201150000017825010
 PA NO.:-PA1-JJ9KX HC 806172001505

PROJECTION METHOD PER DIN 150 A	PROPRIETARY OF DANFOSS NOT REPRODUCE, DISCLOSE OR PROCURE WITHOUT WRITTEN PERMISSION!
1st angle	1st angle
DATE: 2010-05-07	DATE: 2010-05-07
DRAWN: Bhandari	DRAWN: Hangad

GENERAL TOLERANCES PER DIN ISO 2768-m

DIMENSION	0.5-6	6-30	30-120	120-400	400-1000
±0.1	±0.2	±0.3	±0.5	±0.8	

INSTALLATION OF PVWS-250... WITH LR000A20...-CONTROL

SIZE: A0 HC056172001505 G

1 OF 1