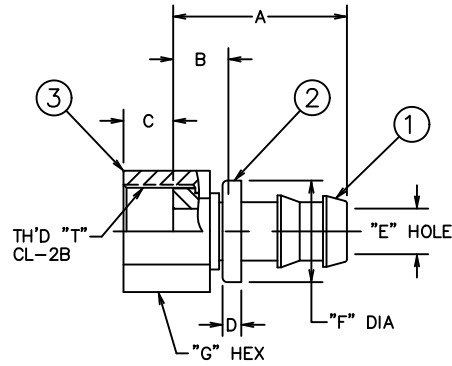


PART NUMBER	TH'D "T"	A REF	B REF	C REF	D REF	E REF	F ±0.25 [±.010]	G REF
FJ7044-0404S	9/16-18	27.9 [1.10]	8.9 [.35]	8.1 [.32]	4.1 [.16]	4.3 [.17]	15.6 [.615]	17.5 [.69]
FJ7044-0606S	11/16-16	32 [1.26]	9.9 [.39]	9.7 [.38]	4.1 [.16]	6.6 [.26]	18.42 [.725]	20.6 [.81]
FJ7044-0806S	13/16-16	34.5 [1.36]	12.4 [.49]	10.9 [.43]	4.1 [.16]	7.6 [.30]	18.42 [.725]	23.9 [.94]
FJ7044-0808S	13/16-16	38.1 [1.50]	12.4 [.49]	10.9 [.43]	4.1 [.16]	9.7 [.38]	22.1 [.870]	23.9 [.94]
FJ7044-1010S	1-14	51.6 [2.03]	12.4 [.49]	13.5 [.53]	3 [.12]	12.2 [.48]	27.05 [1.065]	28.7 [1.13]
FJ7044-1212S	1 3/16-12	52.6 [2.07]	14 [.55]	14.5 [.57]	4.1 [.16]	15.5 [.61]	30.1 [1.185]	35.1 [1.38]

REVISIONS			
REV.	DESCRIPTION	DATE	APPROVED
D	REDRAWN. 1) ADDED FJ7044-1010S	2009-10-08 AJC/KBM	0035914-ECO RPS 20784
E	1) "F" DIMENSION FOR -1010 SIZE WAS "25.53 [1.005]".	2009-10-28 S.M/DHS	0036109-ECO



FJ7044-1212S	FC1539-1212S	4213-1-12B	FC2326-12S		
FJ7044-1010S	FC1539-1010S	4213-1-10B	FC2326-10S		
FJ7044-0808S	FC1539-0808S	4213-1-8B	FC2326-08S		
FJ7044-0806S	FC1539-0806S	4213-1-6B	FC2326-08S		
FJ7044-0606S	FC1539-0606S	4213-1-6B	FC2326-06S		
FJ7044-0404S	FC1539-0404S	4213-1-4B	FC2326-04S		
PART NUMBER	① NIPPLE	② HOSE CAP	③ NUT		

LIST OF MATERIALS

ITEM NO.	MATERIAL	DRAWN A. CHAVAN	CHECKED K. MEHTA	APPROVED K. HO	RELEASE DATE 2009-10-08	0035914-ECO	RPS 20784	THIRD ANGLE PROJECTION	SIZE A2	DRAWING NUMBER FJ7044-S	REV E
1	STEEL										
2	BRASS										
3	STEEL										
		SCALE NONE		DIST U		CAGE CODE 01276		SHEET 1			

METRIC

1. ALL DIMENSIONS ARE IN MILLIMETERS [INCHES].

FJ7044-S
REV. E
SH. 1
DWG. NO.