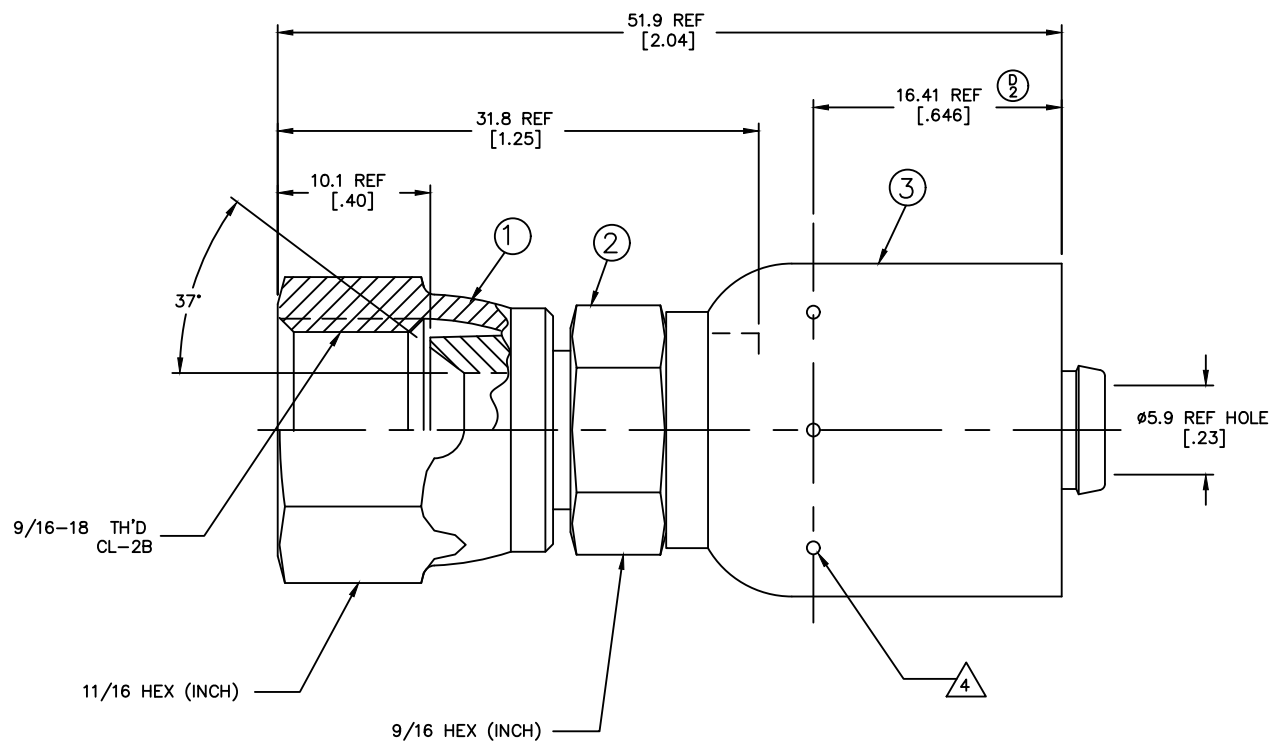


REVISIONS			
REV	DESCRIPTION	DATE	APPROVED
C	REACTIVATED AS PER REV "A" TO SHOW AEROQUIP DESIGN	2006-05-12 RHJ/KBM	EN-F30034 DP-1299
D	ADDED MARKING FOR CRIMPING LOCATION. UPDATED DRAWING ACCORDINGLY. 1) ADDED NOTE #4. 2) ADDED DIMENSION.	2021-11-17 AAG	CO-0221273



METRIC

4. CRIMP LOCATION IMPRESSION MARK (6-8 PLACES). (D)

3. DIMENSIONS ARE IN MILLIMETERS [INCHES].

2. THERE SHOULD BE NO SOCKET MOVEMENT ON THE NIPPLE AFTER CRIMPING.

1. PROCESS AS FOLLOWS:

- (a) CRIMP NUT PER ACES 2813.
- (b) CRIMP SOCKET PER ES 2409P17.

FJ3114-0606S	210204-6S	FW1231-0606S	FW1186-06S		
PART NUMBER	① NUT	② NIPPLE	③ SOCKET		

LIST OF MATERIALS

ITEM NO.	MATERIAL	DRAWN LoTanya Wraggs	FLUID CONVEYANCE DIVISION		
1	STEEL	CHECKED R. D. WEBB	DRAWING TITLE FITTING ASSEMBLY SAE 37° SWIVEL, 1503 HOSE		
2	STEEL	APPROVED R.D.GARRETT			
3	STEEL	RELEASE DATE 2000-05-23			
		EN-F19882	SIZE	DRAWING NUMBER	REV
		DP-1290	A2	FJ3114-0606S	D
		THIRD ANGLE PROJECTION	SCALE	DIST	CAGE CODE
			4/1	U	01276
					SHEET
					1

THE REPRODUCTION, DISTRIBUTION AND UTILIZATION OF THIS DOCUMENT AS WELL AS THE COMMUNICATION OF ITS CONTENTS TO OTHERS WITHOUT EXPLICIT AUTHORIZATION IS PROHIBITED. OFFENDERS WILL BE HELD LIABLE FOR THE PAYMENT OF DAMAGES. ALL RIGHT RESERVED IN THE EVENT OF THE GRANT OF A PATENT, UTILITY MODEL OR DESIGN. (PER ISO 15016)