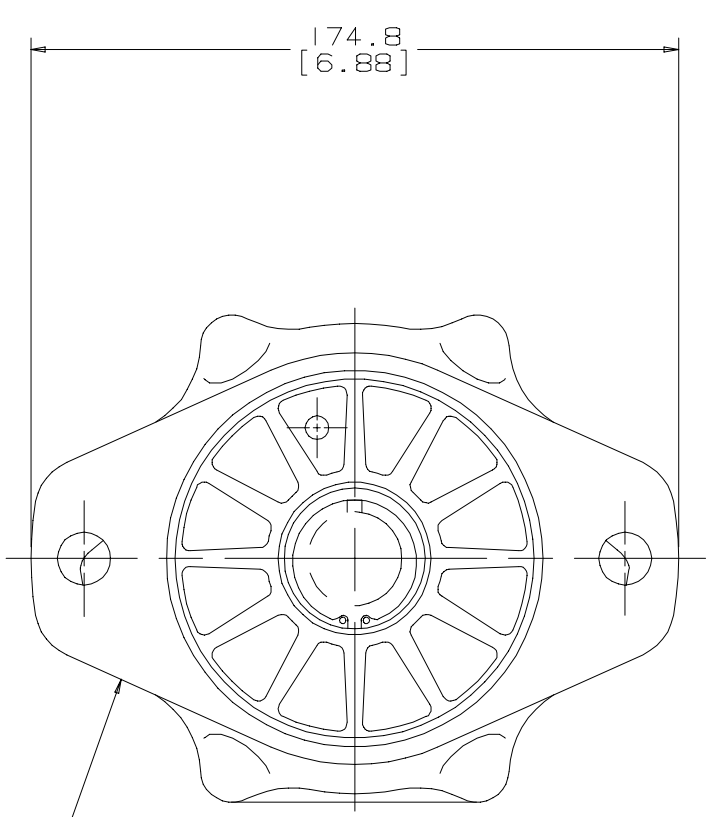
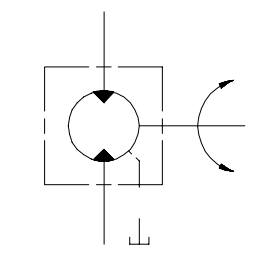
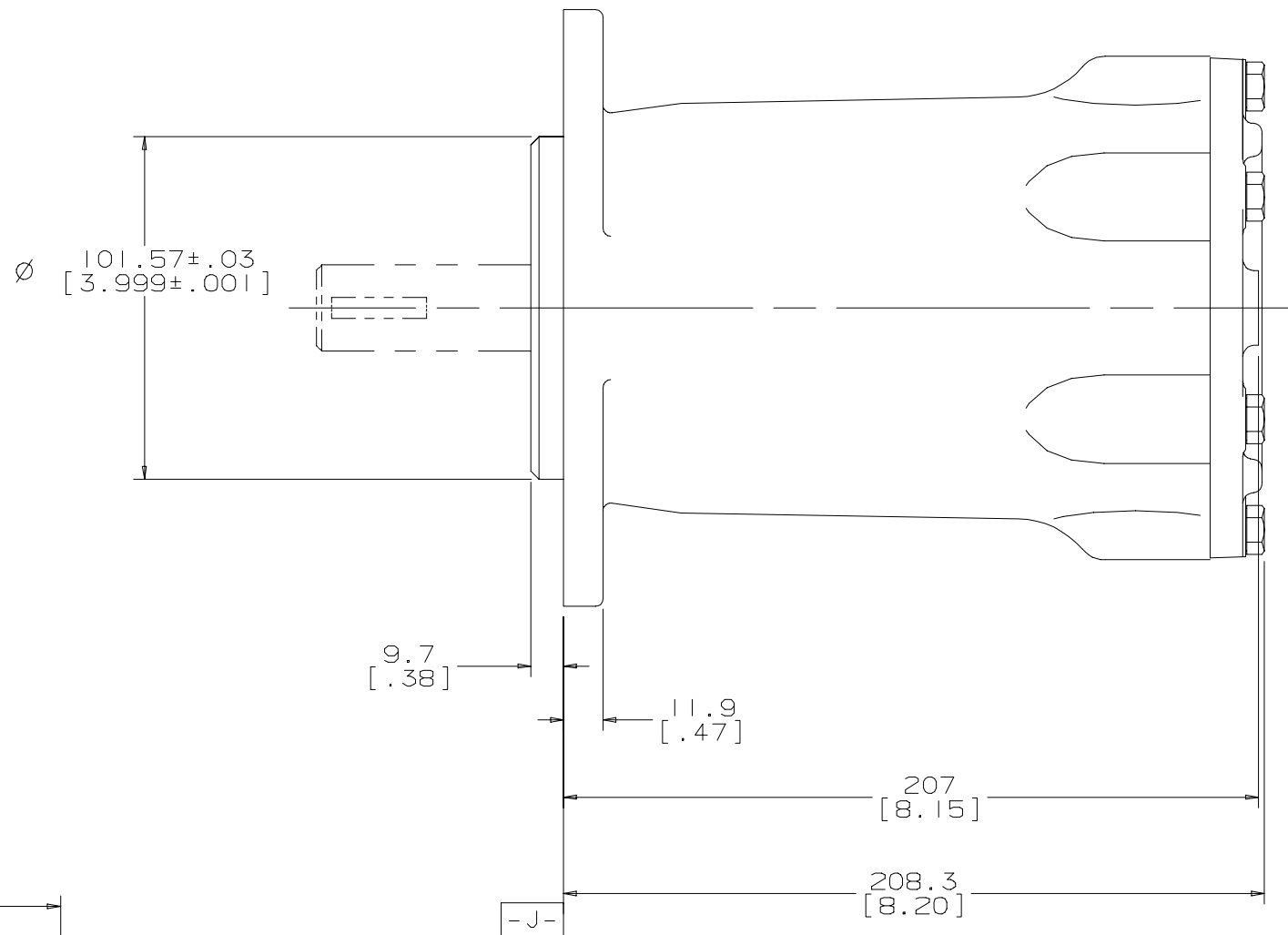
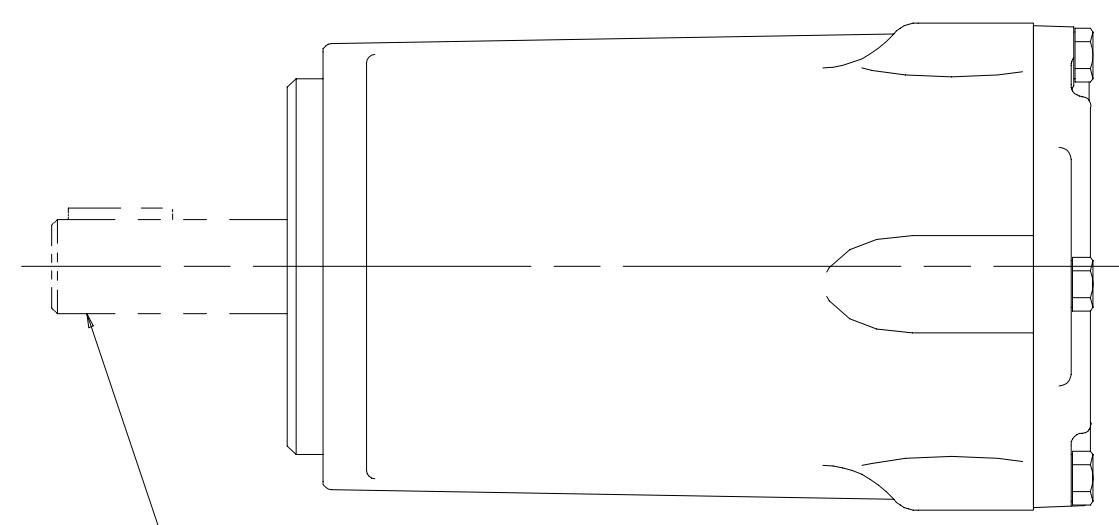


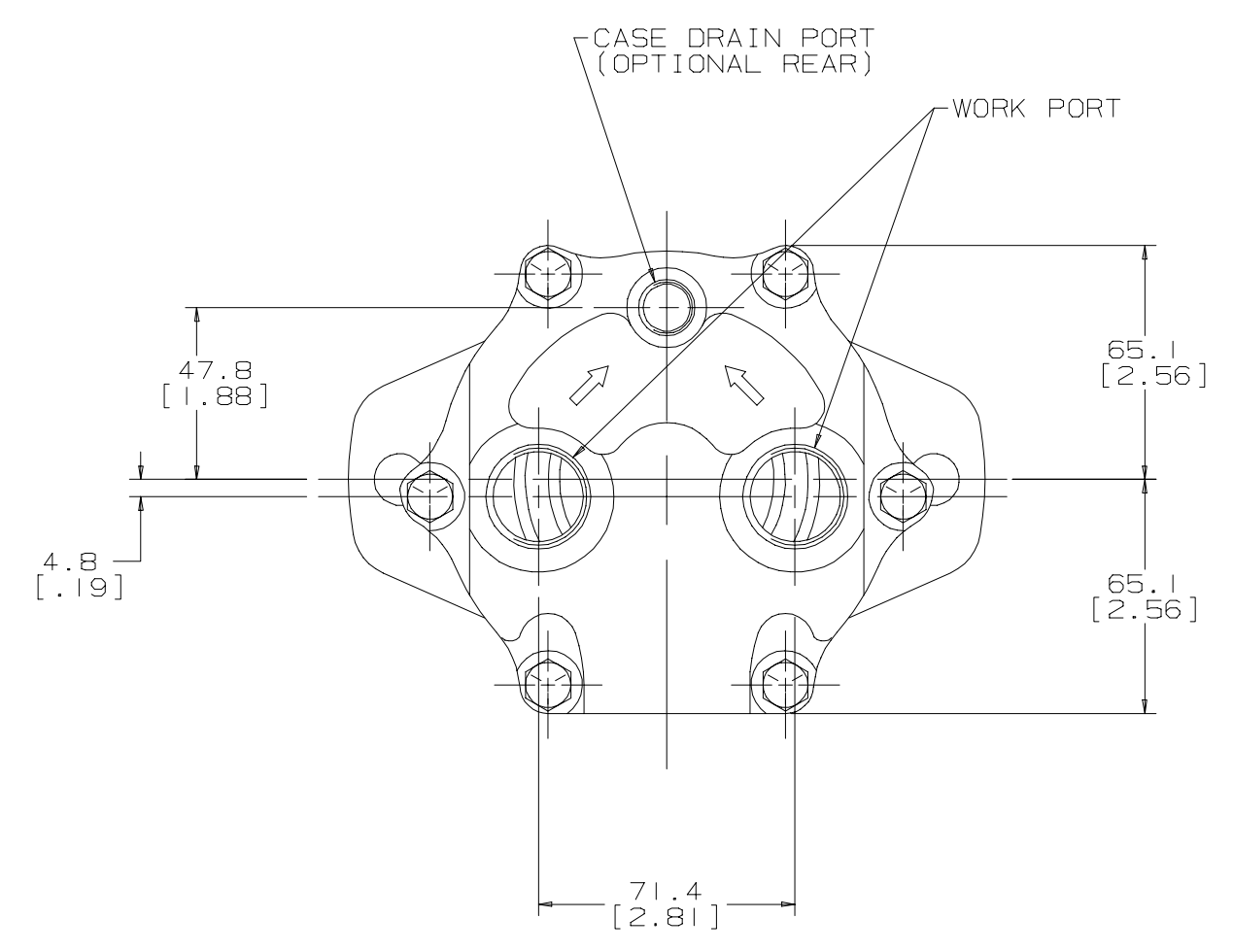
SYM	REVISION			BY	DATE	ECN
	A					
	ENGINEERING RELEASE					



FOR FRONT MOUNT CONFIGURATION SEE SEPARATE DRAWING



FOR SHAFT CONFIGURATION SEE SEPARATE DRAWING



- NOTE
- UNIT MUST BE INSTALLED IN SUCH A POSITION THAT THE CASE DRAIN ASSURES AN OIL LEVEL AT OR ABOVE UNIT CENTER LINE OIL LEVEL MUST BE AT CENTER LINE OR ABOVE BEFORE STARTING
  - ARROW AT INLET INDICATES ROTATION
  - INPUT FLOW MUST NOT EXCEED 37.8 L/min [10 gal/min] DURING THE FIRST REV OF THE MOTOR UNLESS PISTON CAVITIES ARE PURGED OF AIR THEREAFTER FULL GALLONAGE MAY BE ACCEPTED

UNLESS OTHERWISE SPECIFIED ALL DIMENSIONS ARE IN		DRAWING BASED ON ANSI Y14.5M-1982	
INCHES <input type="checkbox"/>	MILLIMETERS <input checked="" type="checkbox"/>	THE REPRODUCTION, DISTRIBUTION, AND UTILIZATION OF THIS DOCUMENT, AS WELL AS THE COMMUNICATION OF ITS CONTENTS TO OTHERS WITHOUT EXPLICIT AUTHORIZATION IS PROHIBITED. OFFENDERS WILL BE HELD LIABLE FOR THE PAYMENT OF DAMAGES. ALL RIGHTS RESERVED IN THE EVENT OF THE GRANT OF A PATENT, UTILITY MODEL, OR DESIGN. (PER ISO 16016)	
TOLERANCES			
.x ± REF	.xx ± REF		
.xxx ± REF	< ±	DRAIN BY/DATE	RAB 9-17-91
UNSPECIFIED RADII ARE		MATERIAL/HEAT TREAT	
UNSPECIFIED DRAFT ANGLES ARE		TITLE	
DRAWING FORMAT CAD <input checked="" type="checkbox"/> MANUAL <input type="checkbox"/>		PISTON MOTOR INSTALLATION	
THIRD ANGLE PROJECTION		NUMBER	
DO NOT SCALE		A-426	
		SCALE 1/1 SHEET 1 OF 1	

G HK