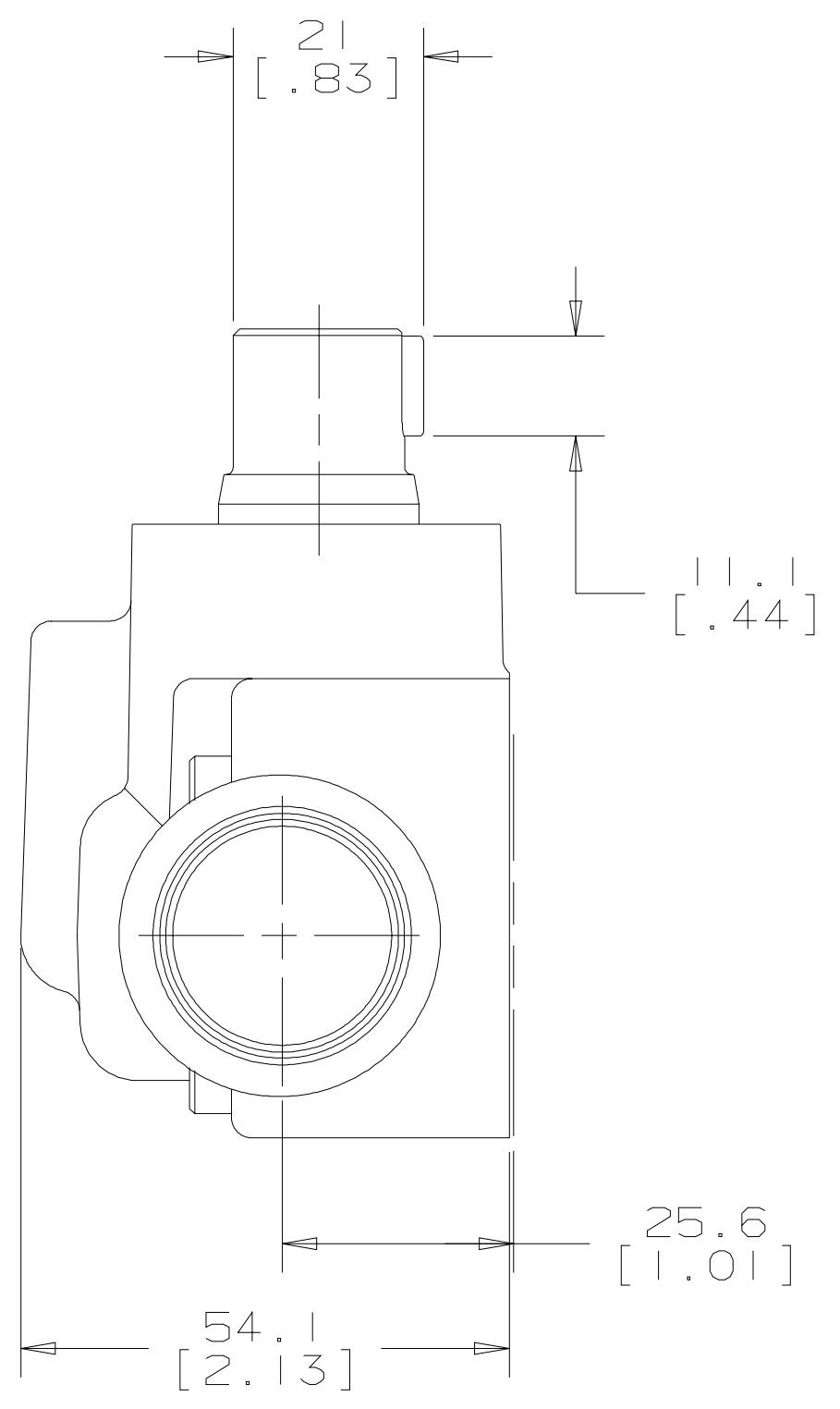
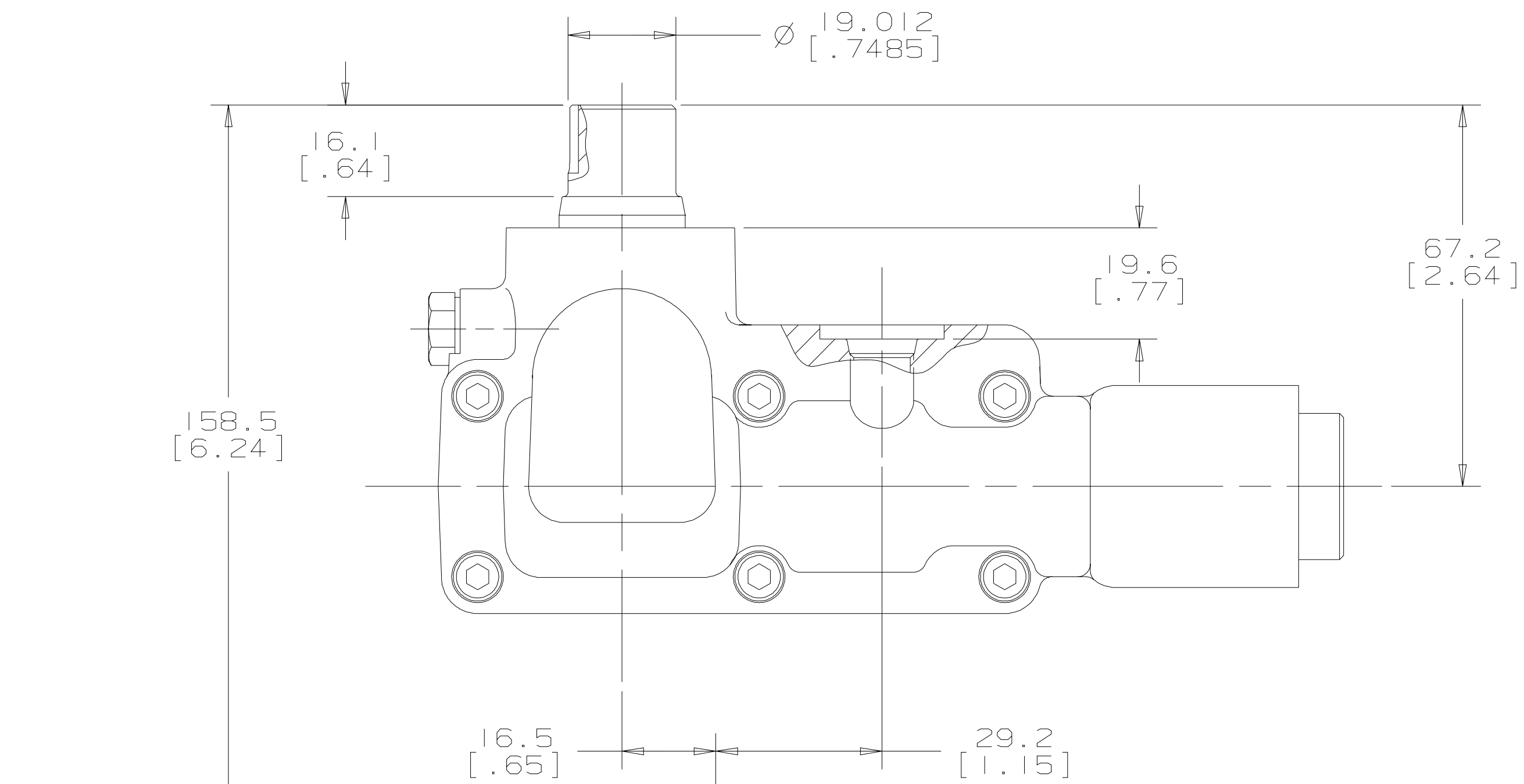
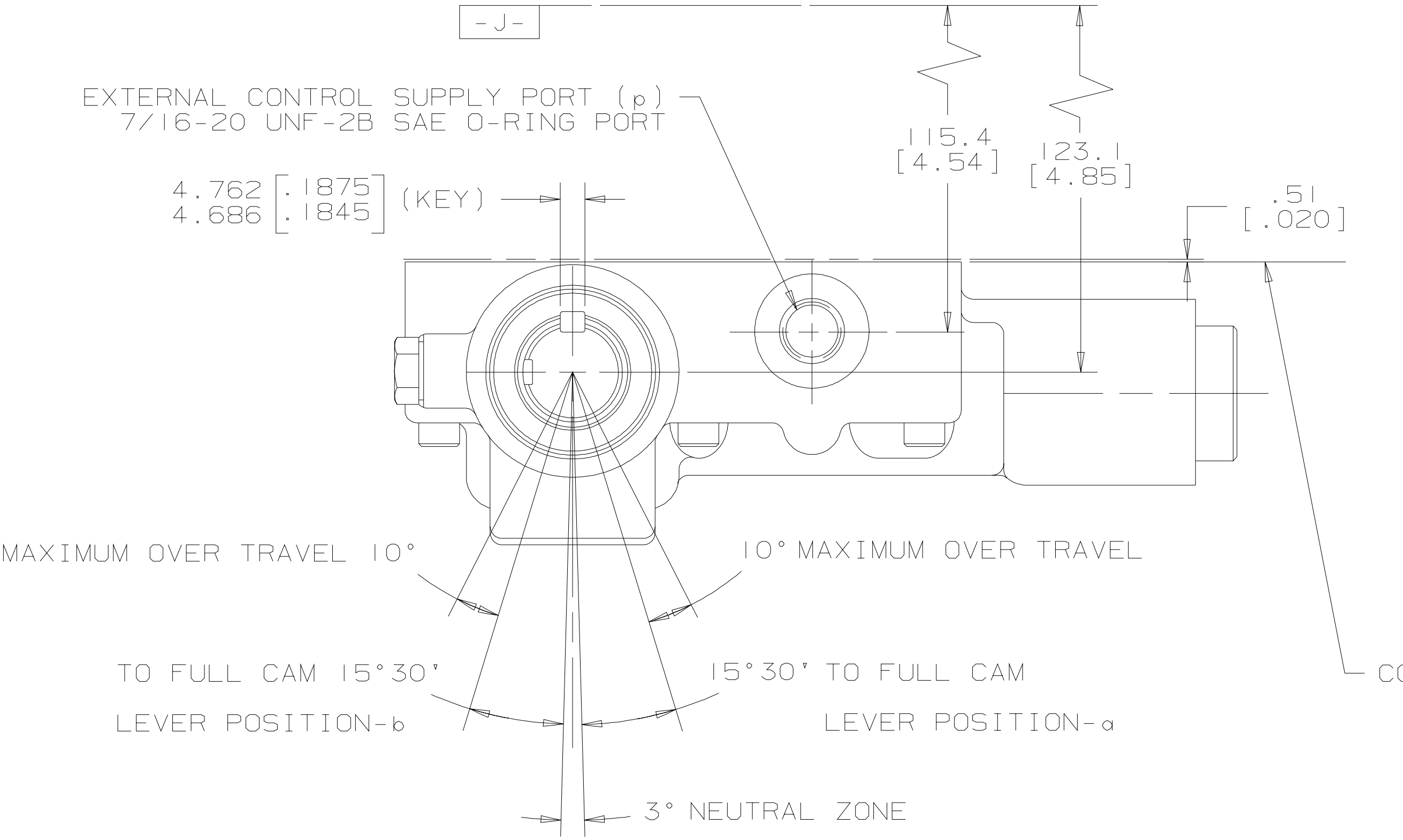


REV	DESCRIPTION	BY	CHK	DATE	ECN
A	ENGINEERING RELEASE	MJZ	MAS	4-29-04	M61697A

- NOTE
- RIGHT HAND (CLOCKWISE) ROTATION  
 LEVER POSITION-a ----- PORT-A FLOW FROM SYSTEM PRESSURE  
 LEVER POSITION-b ----- PORT-B FLOW FROM SYSTEM PRESSURE  
 LEFT HAND (COUNTER CLOCKWISE) ROTATION  
 LEVER POSITION-a ----- PORT-B FLOW FROM SYSTEM PRESSURE  
 LEVER POSITION-b ----- PORT-A FLOW FROM SYSTEM PRESSURE
  - TORQUE APPLIED TO CONTROL SHAFT MUST NOT EXCEED 4.52 N·m [40 lbf·in]
  - INPUT SHAFT SIDE LOAD CAPACITY OF 22 N [5 lbf] AT CENTER OF INPUT SHAFT KEYWAY



REVIEWED FOR CLASSIFICATION PER ESP-042 GSH

UNLESS OTHERWISE SPECIFIED ALL DIMENSIONS ARE IN INCHES <input type="checkbox"/> MILLIMETERS <input checked="" type="checkbox"/> TOLERANCES .x ±----- .xx ±REF .xxx ±ONLY < ±----- UNSPECIFIED RADII ARE ----- UNSPECIFIED DRAFT ANGLES ARE ----- DRAWING FORMAT CADD <input checked="" type="checkbox"/> MANUAL <input type="checkbox"/>	DRAWING BASED ON ANSI Y14.5M-1982		THE REPRODUCTION, DISTRIBUTION, AND UTILIZATION OF THIS DOCUMENT, AS WELL AS THE COMMUNICATION OF ITS CONTENTS TO OTHERS WITHOUT EXPLICIT AUTHORIZATION IS PROHIBITED. OFFENDERS WILL BE HELD LIABLE FOR THE PAYMENT OF DAMAGES. ALL RIGHTS RESERVED IN THE EVENT OF THE GRANT OF A PATENT, UTILITY MODEL, OR DESIGN. (PER ISO 16016)	
	DRAWN BY/DATE MJZ 4-29-04 CHECKED BY/DATE MAS 5-4-04 ENGRG BY/DATE MAS 5-4-04 METALLURGY BY/DATE -----	MATERIAL/HEAT TREAT		
	SERVO CONTROL INSTALLATION		NUMBER	
	THIRD ANGLE PROJECTION		A-387-036	
	DO NOT SCALE	ARITHMETICAL AVERAGE	SCALE 1/1	SHEET 1 OF 1