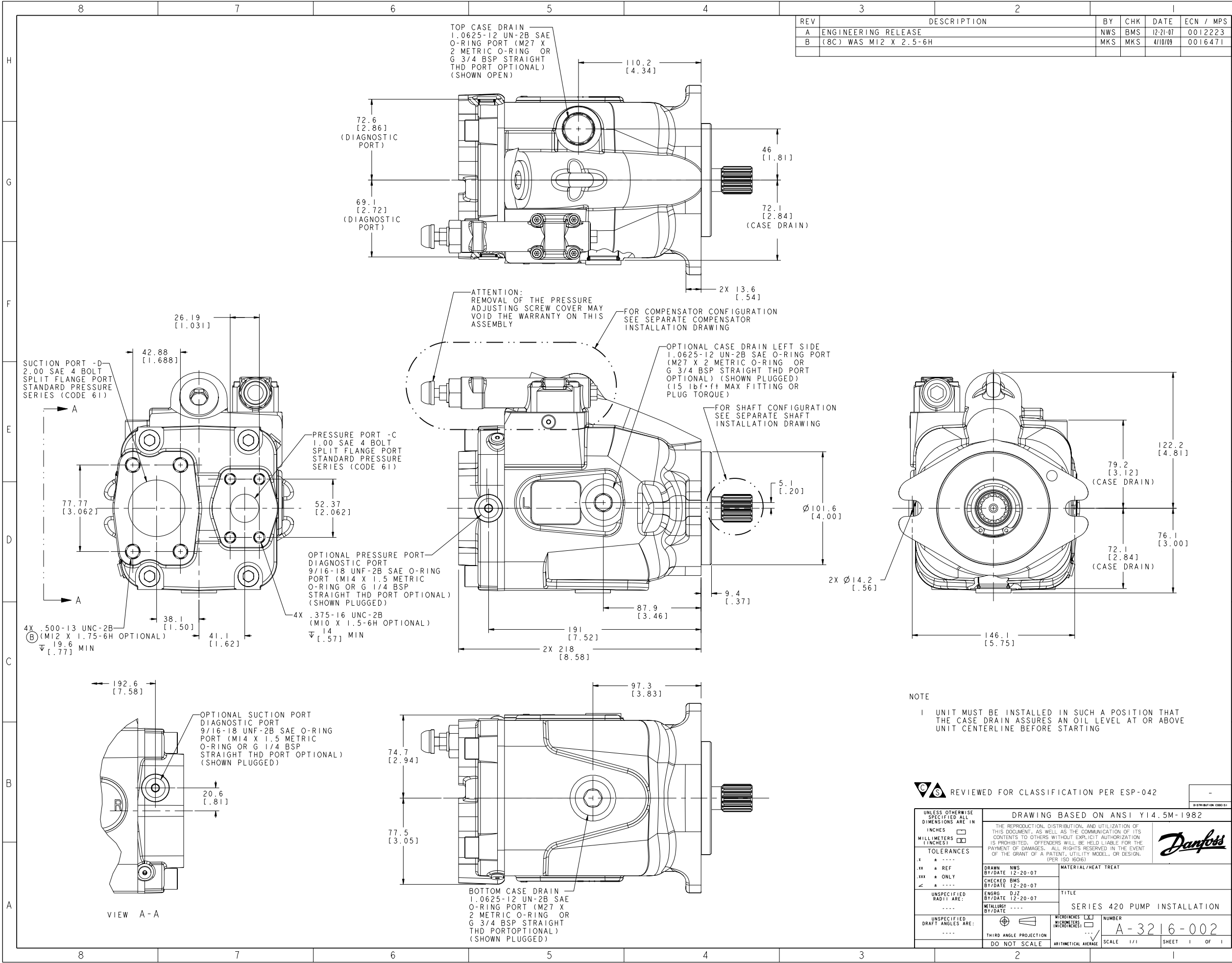


REV	DESCRIPTION	BY	CHK	DATE	ECN / MPS
A	ENGINEERING RELEASE	NWS	BMS	12-21-07	0012223
B	(8C) WAS M12 X 2.5-6H	MKS	MKS	4/10/09	0016471



NOTE  
 1 UNIT MUST BE INSTALLED IN SUCH A POSITION THAT  
 THE CASE DRAIN ASSURES AN OIL LEVEL AT OR ABOVE  
 UNIT CENTERLINE BEFORE STARTING

REVIEWED FOR CLASSIFICATION PER ESP-042

DRAWING BASED ON ANSI Y14.5M-1982

UNLESS OTHERWISE SPECIFIED ALL DIMENSIONS ARE IN INCHES [MILLIMETERS]

TOLERANCES  
 .X \* - .004  
 .XX \* REF  
 .XXX \* ONLY  
 < \* - .001

UNSPECIFIED RADIUS ARE:  
 .005  
 .010  
 .015  
 .020  
 .030  
 .040  
 .050  
 .060  
 .070  
 .080  
 .090  
 .100

UNSPECIFIED DRAFT ANGLES ARE:  
 1:4  
 1:3  
 1:2  
 1:1

THIRD ANGLE PROJECTION  
 DO NOT SCALE

DRAWN NWS BY/DATE 12-20-07  
 CHECKED BMS BY/DATE 12-20-07  
 ENGRG D12 BY/DATE 12-20-07  
 METALLURGY BY/DATE

MATERIAL/HEAT TREAT

TITLE  
 SERIES 420 PUMP INSTALLATION

NUMBER  
 A-3216-002

SCALE 1:1 SHEET 1 OF 1

**Danfoss**