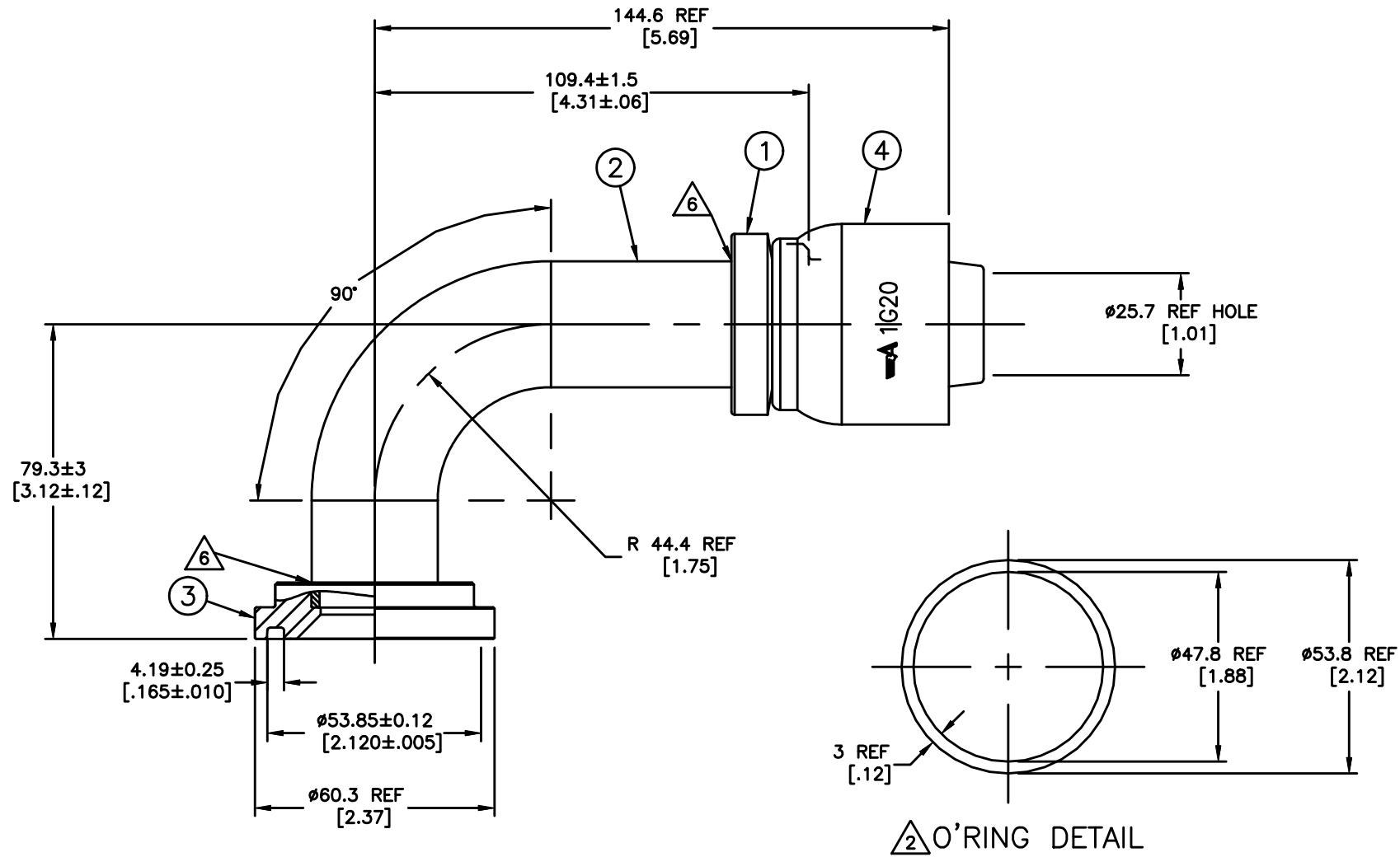


REVISIONS			
REV	DESCRIPTION	DATE	APPROVED
F	REDRAWN & REDESIGNED (1) ADDED INCH DIMENSIONS AND NOTE #4 (2) ADDED ALTERNATE CONSTRUCTION, NOTE #5.	2000-09-11	EN-F22890 DP-1299 BAL/WRH



METRIC

1G24FLB20
SH. REV. F

5	1G24FLB20	1F90001-3220AR	19.020-32.14	17.007-32-24	1G20	
	1G24FLB20	1F40014-2020AB	1F40034-20-02AB	4624-24-20S	1G20	
	AEROQUIP PART NUMBER	① NIPPLE	② ELBOW	③ SHOULDER	④ SOCKET	

LIST OF MATERIALS

ITEM NO.	MATERIAL
1	STEEL
2	STEEL
3	STEEL
4	STEEL

DRAWN B.LAMPLEY CHECKED W.R.HYDE APPROVED W.R.HYDE RELEASE DATE 2002-10-16 EN-F22890 DP-1299 THIRD ANGLE PROJECTION	Aeroquip PRODUCTS TECHNICAL CENTER MAUMEE, OHIO, U.S.A.
DRAWING TITLE FITTING ASSEMBLY 90°, SPLIT FLANGE TYPE (CODE 61), OTC	
SIZE A2	DRAWING NUMBER 1G24FLB20
SCALE 1/1	DIST U CAGE CODE 01276 SHEET
REV F	

- ⑥ BRAZE PER ACES 2814.
- ⑤ ALTERNATIVE CONSTRUCTION. (F₂)
- ④ DIMENSIONS ARE IN MILLIMETERS [INCHES]. (F₁)
- ③ 1S24FL20 NIPPLE ASSEMBLY MAY BE SUBSTITUTED FOR ITEMS #1, #2 & #3.
- ② O-RING SHOWN FOR REFERENCE ONLY: SUPPLIED BUT NOT FURNISHED WITH ASSEMBLY.
- ① ZINC PLATE PER 2751.

NOTICE TO PERSONS RECEIVING THIS DRAWING AND / OR TECHNICAL INFORMATION
 Eaton Corporation claims proprietary rights in the information disclosed herein. This document is loaned in confidence and is not to be reproduced or used to manufacture anything shown herein without the written permission of the Eaton Corporation.