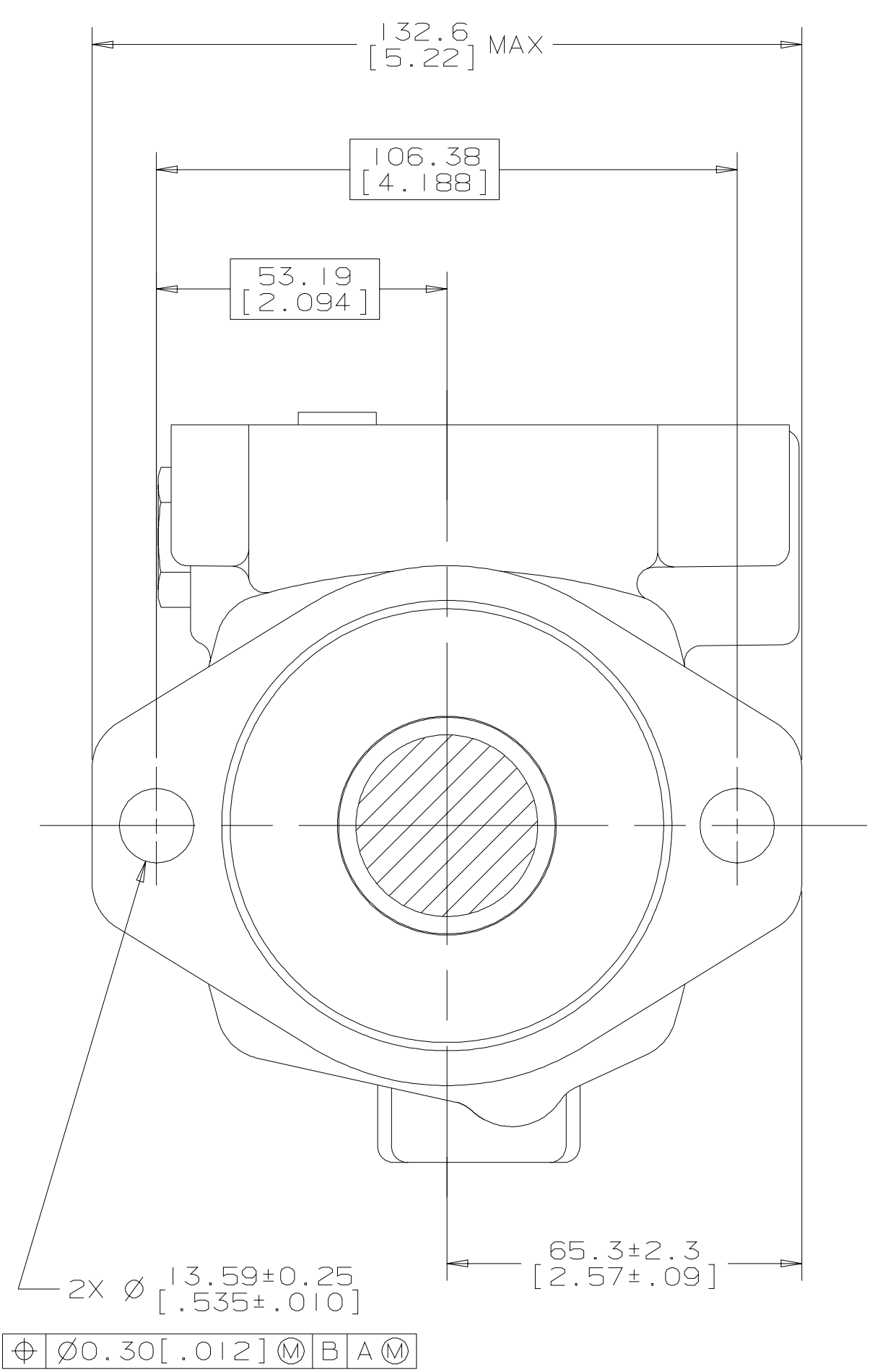
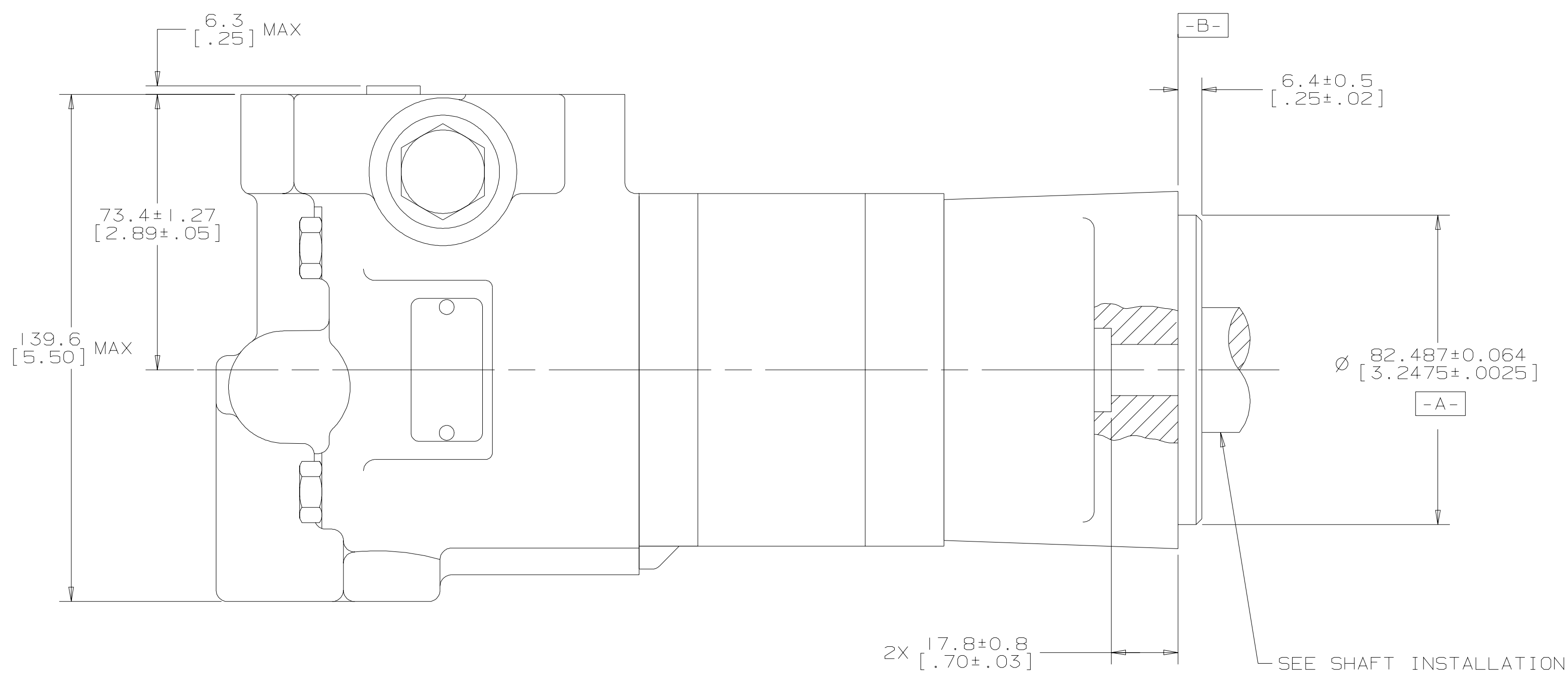
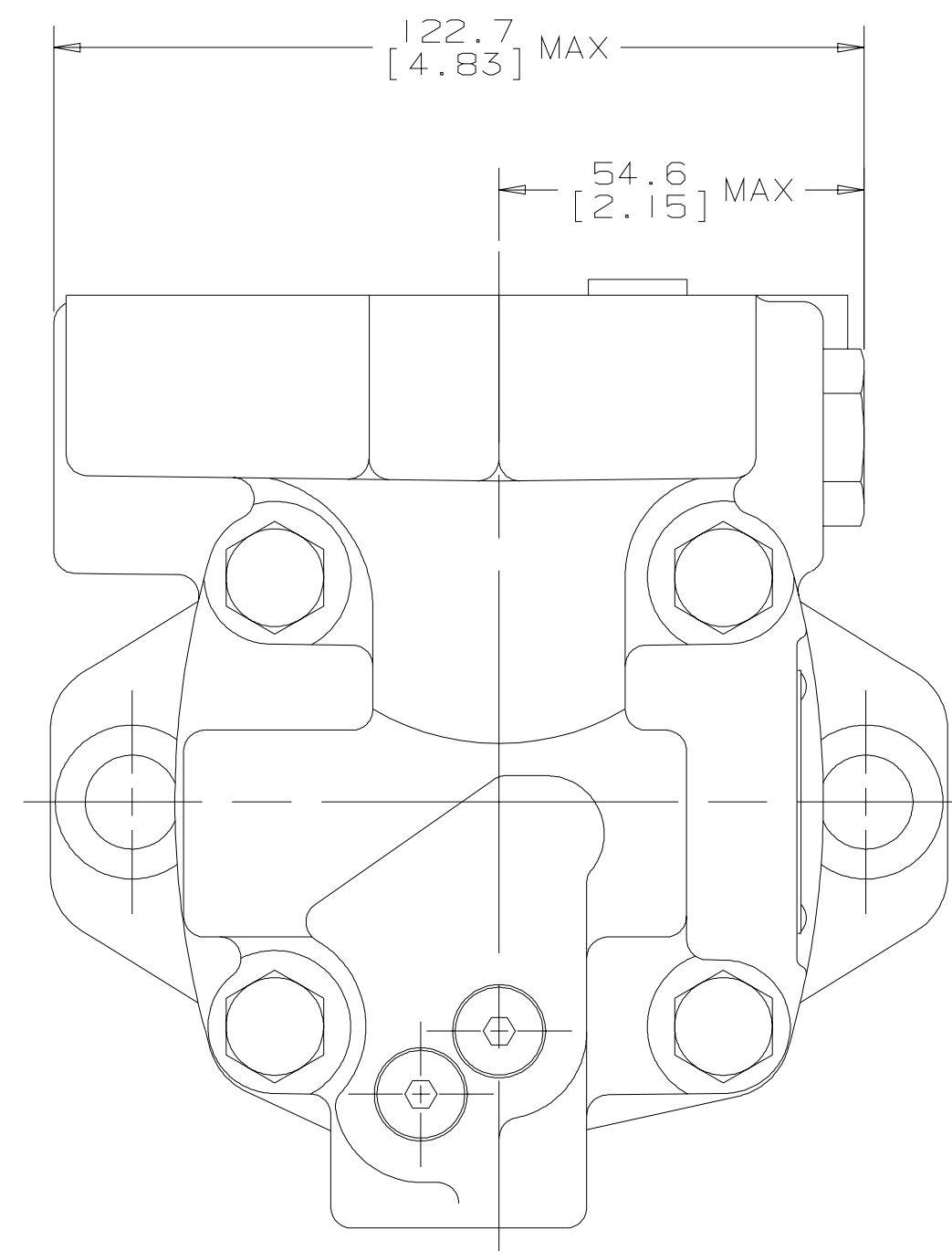
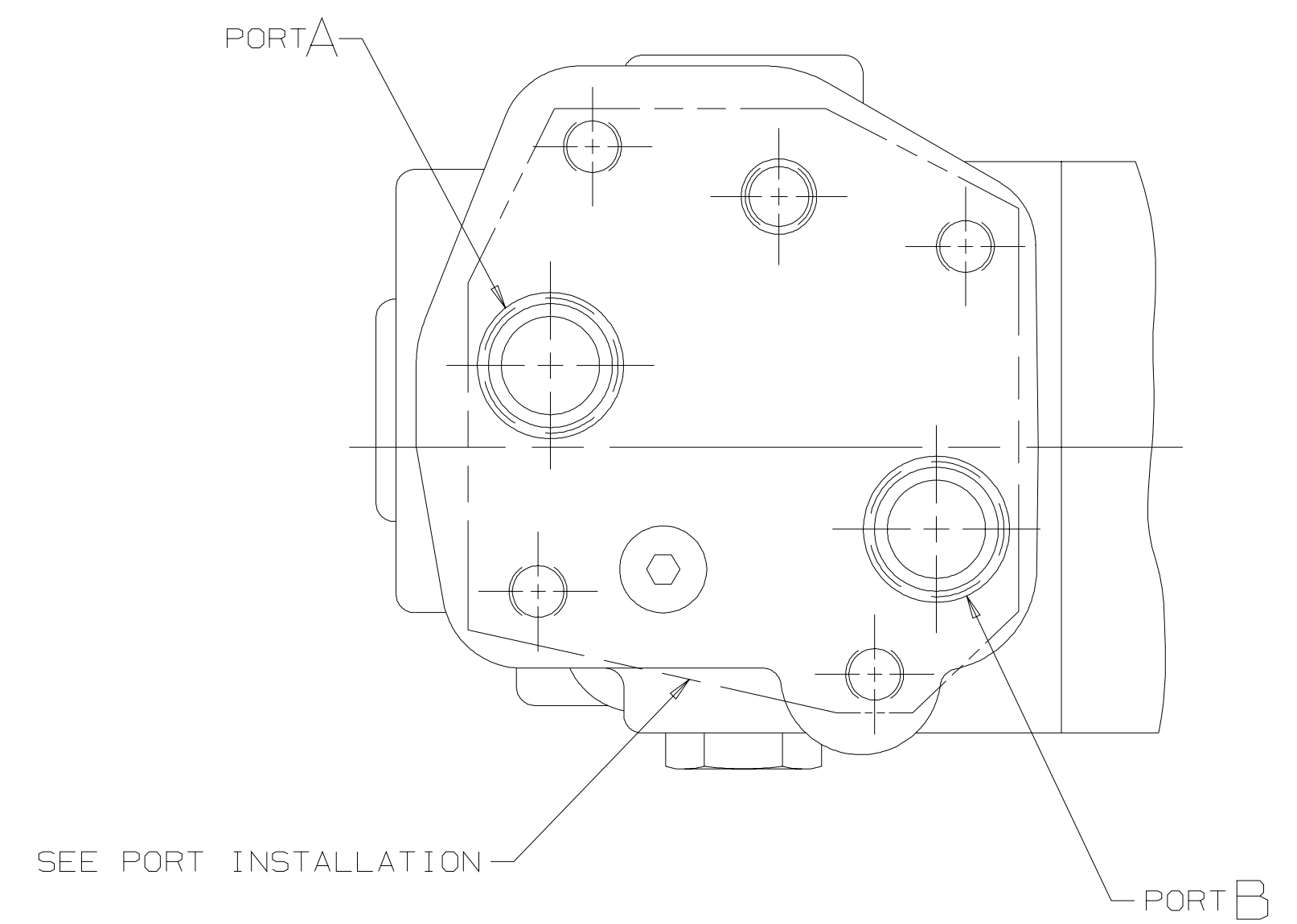


SYM	REVISION	BY	DATE	ECN
A	ENGINEERING RELEASE	RAF	11/23/93	24603
B	(2C) WAS 131.1 [5.16] MAX	HRK	11/11/08	ECR 13495
C	REVISED FOR ASSY STACK-UP	SKS	01/20/10	M78154
D	(6C) 6.3 [.25] MAX WAS 3.4 [.14] MAX	HRK	08/20/10	26463



NOTE

1 ROTATION:
 STANDARD: WHEN FACING SHAFT END OF MOTOR, SHAFT TO ROTATE;
 CLOCKWISE WHEN PORT "A" IS PRESSURIZED
 COUNTERCLOCKWISE WHEN PORT "B" IS PRESSURIZED

REVERSE: WHEN FACING SHAFT END OF MOTOR, SHAFT TO ROTATE;
 CLOCKWISE WHEN PORT "B" IS PRESSURIZED
 COUNTERCLOCKWISE WHEN PORT "A" IS PRESSURIZED

2 MOUNTING TYPE: AC
 STANDARD, 2 BOLT: Ø 82.6 [3.25] PILOT
 Ø 13.59 [.535] HOLES ON Ø 106.4 [4.19]
 BOLT CIRCLE "SAE A"

CS REVIEWED FOR CLASSIFICATION PER ESP-042

DRAWING BASED ON ANSI Y14.5M-1982

UNLESS OTHERWISE SPECIFIED ALL DIMENSIONS ARE IN: INCHES MILLIMETERS

THE REPRODUCTION, DISTRIBUTION, AND UTILIZATION OF THIS DOCUMENT, AS WELL AS THE COMMUNICATION OF ITS CONTENTS TO OTHERS WITHOUT EXPLICIT AUTHORIZATION IS PROHIBITED. OFFENDERS WILL BE HELD LIABLE FOR THE PAYMENT OF DAMAGES. ALL RIGHTS RESERVED IN THE EVENT OF THE GRANT OF A PATENT, UTILITY MODEL, OR DESIGN. (PER ISO 16016)

Danfoss

TOLERANCES

DRWN BY/DATE: RAF 8/10/93	MATERIAL/HEAT TREAT
CHEK BY/DATE: AGJ 2-14-94	
ENGR BY/DATE: MLB 2-16-94	TITLE: 2000 SERIES - TWO SPEED MOTOR INSTALLATION
METALLURGY BY/DATE	NUMBER: A-665-011

UNSPECIFIED DRAFT ANGLES ARE: THIRD ANGLE PROJECTION

D SIZE DO NOT SCALE

ARITHMETICAL AVERAGE

SCALE 1/1 SHEET 1 OF 1