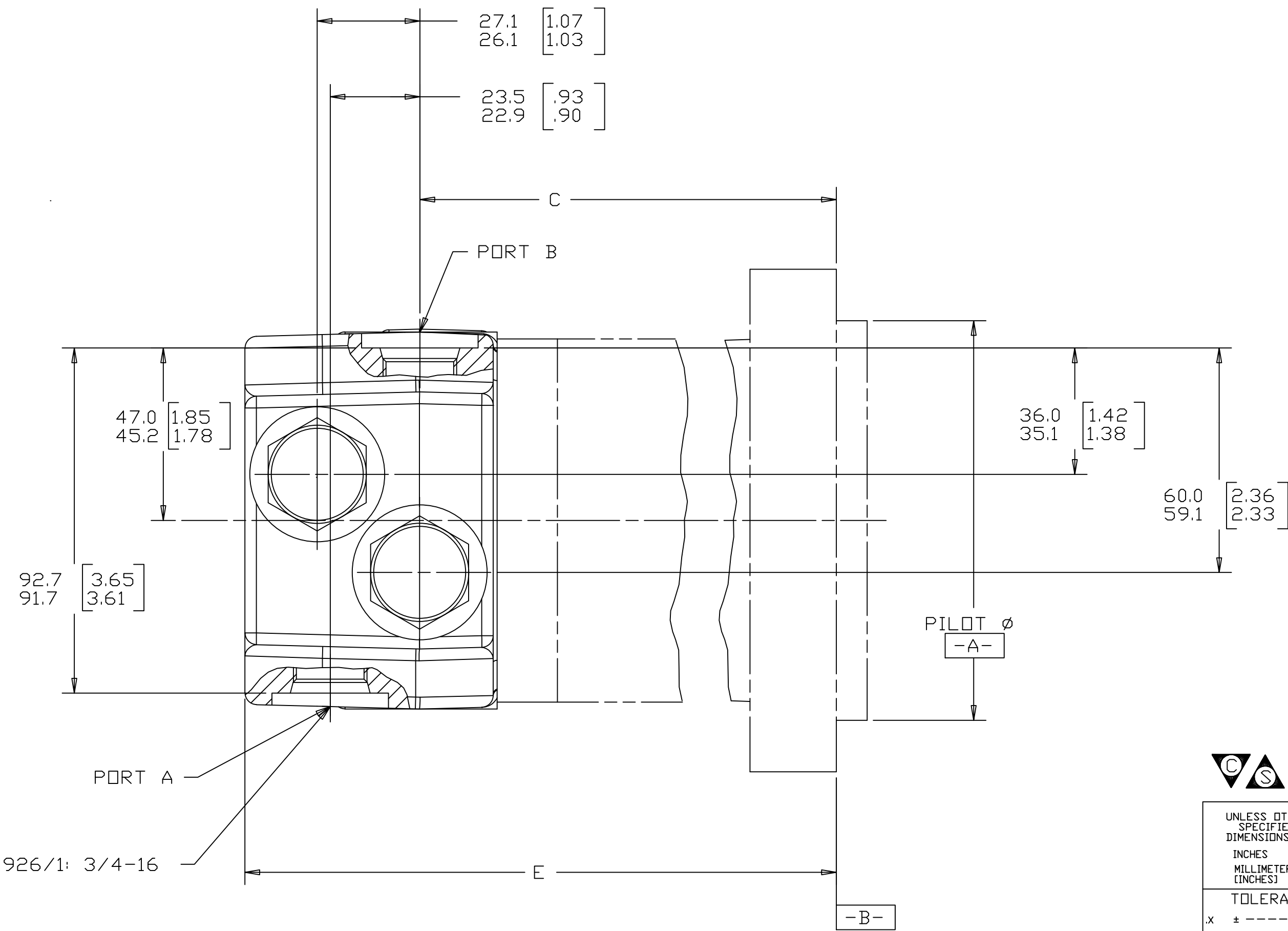
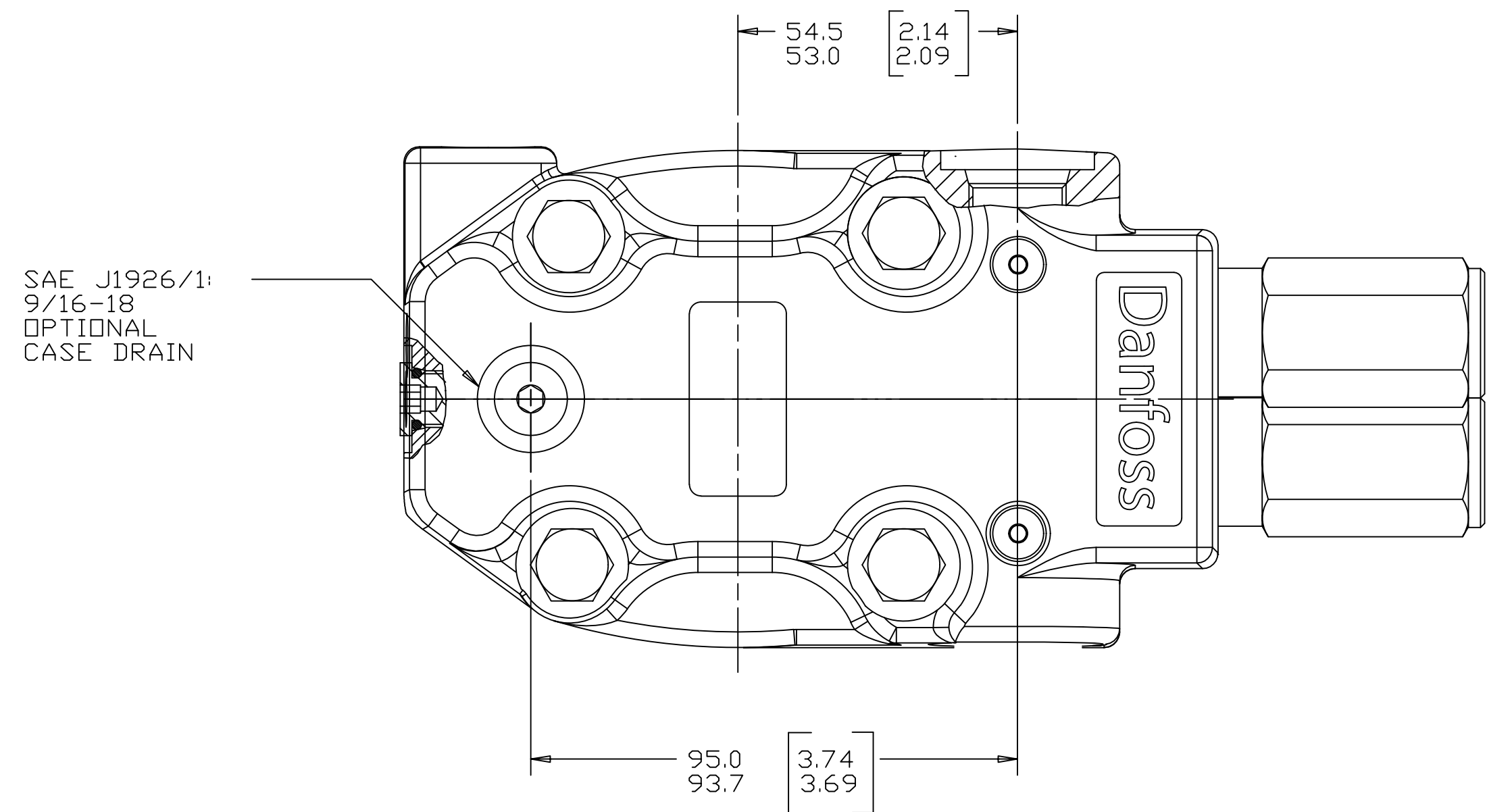
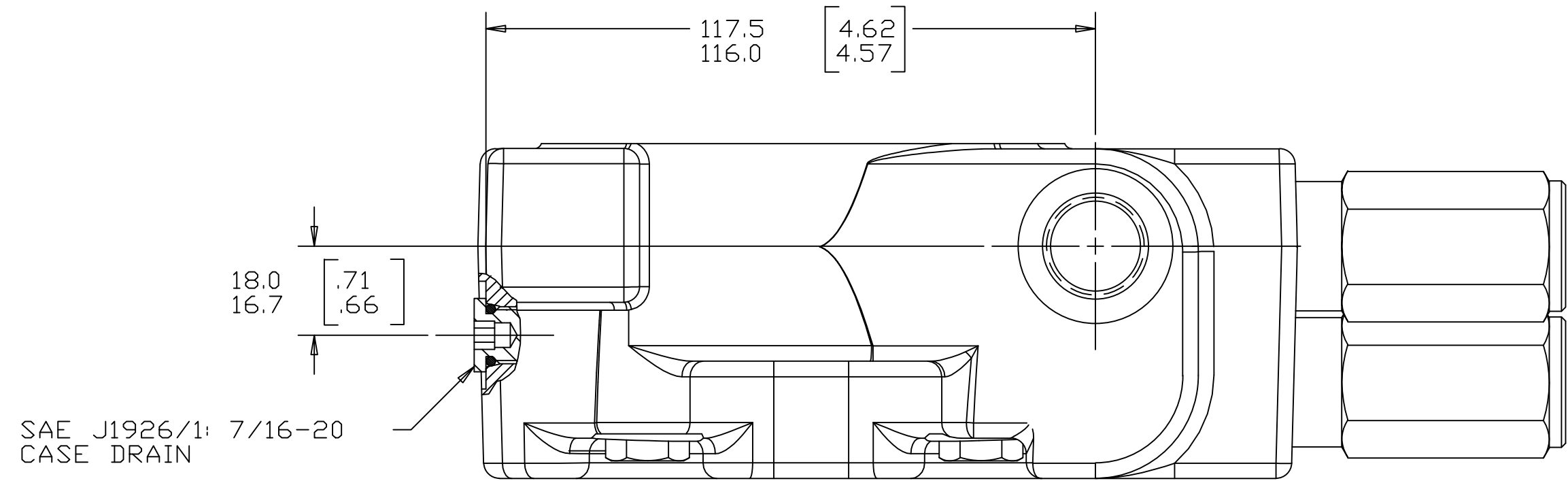


MOUNTING TYPE AF, AT		
DISP	C	E MAX
10	153.9-155.4 [6.06-6.12]	200.9 [7.91]
12	163.1-164.4 [6.42-6.47]	210.1 [8.27]
15	174.4-175.8 [6.86-6.92]	221.3 [8.71]
20	190.2-191.7 [7.49-7.55]	237.2 [9.34]
24	190.2-191.7 [7.49-7.55]	237.2 [9.34]
25	207.8-209.1 [8.18-8.23]	254.8 [10.03]
30	207.8-209.1 [8.18-8.23]	254.8 [10.03]

REV	DESCRIPTION	BY	CHK	DATE	ECN
A	ENGINEERING RELEASE	AGJ		5-9-05	M64632
B	(6B) ADDED CASE DRAIN PORT	PM		6-13-05	M64843
C	(6B) 41.1/40.1[1.62/1.58] -WAS- 28.4/27.4[1.12/1.08]	MGF		6-23-05	52148
D	(8D)UPDATED TABLE VALUES	PM		8-18-05	52660
E	(4B)2X 46.4/45.8[1.83/1.81] WAS 2X 45.0/44.4[1.77/1.75]	AMM	AMM	1-26-09	0014817
F	REVISED	PRK	KNR	8-18-09	M76666
G	-1X(8B)"...OPTIONAL CASE DRAIN" WAS "...CASE DRAIN" -2X(7B) REVISED PICTORIALY (REMOVED RIVETS) -3X(2A) NOTE 2 WAS "CASE FLOW OPTION: 01, 03, 07 OR 11"	CSG		5-16-13	M89253



NOTE
 1 PORT OPTION: AJ
 2 CASE FLOW OPTION: 19

REVIEWED FOR CLASSIFICATION PER ESP-042

DRAWING BASED ON ANSI Y14.5M-1982

UNLESS OTHERWISE SPECIFIED ALL DIMENSIONS ARE IN INCHES MILLIMETERS

TOLERANCES
 x ± ----
 .xx ± REF
 .xxx ± ONLY
 < ± ----

UNSPECIFIED RADII ARE ----
 UNSPECIFIED DRAFT ANGLES ARE ----

DRAWING FORMAT CADD MANUAL

THE REPRODUCTION, DISTRIBUTION AND UTILIZATION OF THIS DOCUMENT AS WELL AS THE COMMUNICATION OF ITS CONTENTS TO OTHER WITHOUT EXPLICIT AUTHORIZATION IS PROHIBITED. OFFENDERS WILL BE HELD LIABLE FOR THE PAYMENT OF DAMAGES. ALL RIGHT RESERVED IN THE EVENT OF THE GRANT OF A PATENT, UTILITY MODEL OR DESIGN. (PER ISO 16016)

DRAWN BY/DATE AGJ 5-12-05
 CHECKED BY/DATE SMM 5-12-05
 ENGRG BY/DATE JML 5-12-05
 METALLURGY BY/DATE ----

MATERIAL/HEAT TREAT
 TITLE 4000 COMPACT SERIES MOTOR PORT INSTALLATION
 MICROMETERS NUMBER A-1331-015
 MICROINCHES
 THIRD ANGLE PROJECTION
 DO NOT SCALE
 ARITHMETICAL AVERAGE

SCALE 1/1 SHEET 1 OF 1