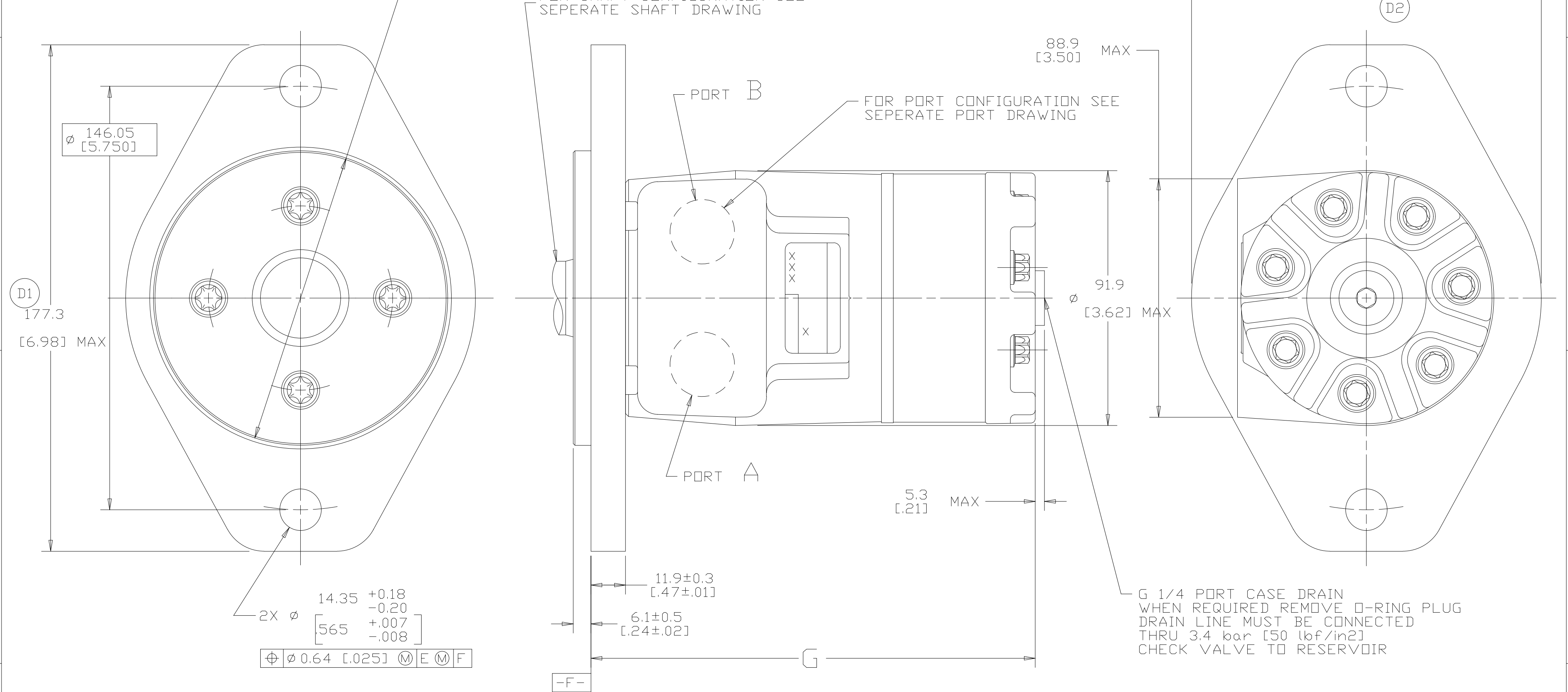


DISPL CODE	G MAX
022	128.8 [5.07]
030	131.3 [5.17]
040	134.4 [5.29]
049	136.9 [5.39]
062	141.0 [5.55]
080	146.3 [5.76]
096	151.1 [5.95]
119	158.0 [6.22]
149	166.9 [6.57]
187	178.3 [7.02]
226	190.0 [7.48]

SYM	REVISION	BY	DATE	ECN
A	ENGINEERING RELEASE	RAF	2-8-94	M11208
B	(2B) DIM 5.3 [.21] MAX WAS 3.8 [.15] MAX	JMM	10-18-94	25844
C	-1)(2C) 88.9 [3.50] MAX WAS 84.6 [3.33] MAX -2)(2C) Ø 91.9 [3.62] MAX WAS Ø 87.9 [3.46] MAX	JMM	10-26-94	26147
D	-1)(4C) WAS 177.1 [6.97] MAX, -2)(1D) WAS 122.2 [4.81] MAX,	AAK	04-07-04	46856
E	-1)(4D) UPDATED TABLE FOR DISPL CODE -2)(4A) NOTE 2 MOUNTING FLANGE WAS "H"	PM	03-27-07	0004355
F	(4A) NOTE 3 WAS CASE DRAIN :2....	SSP	12-26-15	0068068_1



NOTE

1 ROTATION STANDARD WHEN FACING SHAFT END OF MOTOR SHAFT TO ROTATE CLOCKWISE WHEN PORT "A" IS PRESSURIZED COUNTERCLOCKWISE WHEN PORT "B" IS PRESSURIZED

REVERSE WHEN FACING SHAFT END OF MOTOR, SHAFT TO ROTATE CLOCKWISE WHEN PORT "B" IS PRESSURIZED COUNTERCLOCKWISE WHEN PORT "A" IS PRESSURIZED

2 MOUNTING FLANGE DD = STANDARD, 2 BOLT: Ø 101.6 [4.00] X 6.1 [.24] PILOT Ø 14.35 [.565] HOLES ON Ø 146.0 [5.75] BOLT CIRCLE (SAE B)

3 CASE DRAIN 02 = G 1/4 PORT (END CAP)

UNLESS OTHERWISE SPECIFIED ALL DIMENSIONS ARE IN INCHES <input type="checkbox"/> MILLIMETERS (INCHES) <input checked="" type="checkbox"/> TOLERANCES .x ± ---- .xx ± ---- .xxx ± ---- < ---- UNSPECIFIED RADII ARE ---- UNSPECIFIED DRAFT ANGLES ARE ---- DRAWING FORMAT CADD <input checked="" type="checkbox"/> MANUAL <input type="checkbox"/>	DRAWING BASED ON ANSI Y14.5M-1982		
	THE REPRODUCTION, DISTRIBUTION AND UTILIZATION OF THIS DOCUMENT AS WELL AS THE COMMUNICATION OF ITS CONTENTS TO OTHER WITHOUT EXPLICIT AUTHORIZATION IS PROHIBITED. OFFENDERS WILL BE HELD LIABLE FOR THE PAYMENT OF DAMAGES. ALL RIGHT RESERVED IN THE EVENT OF THE GRANT OF A PATENT, UTILITY MODEL OR DESIGN. (PER ISO 16016)		
	DRAWN BY/DATE RAF 2/4/94 CHECKED BY/DATE SDR 2/23/94 ENGRG BY/DATE RVA 3/3/94 METALLURGY BY/DATE ----	MATERIAL/HEAT TREAT	
	THIRD ANGLE PROJECTION DO NOT SCALE	TITLE T MOTOR INSTALLATION NUMBER A-821-015 SCALE 1/1 SHEET 1 OF 1	