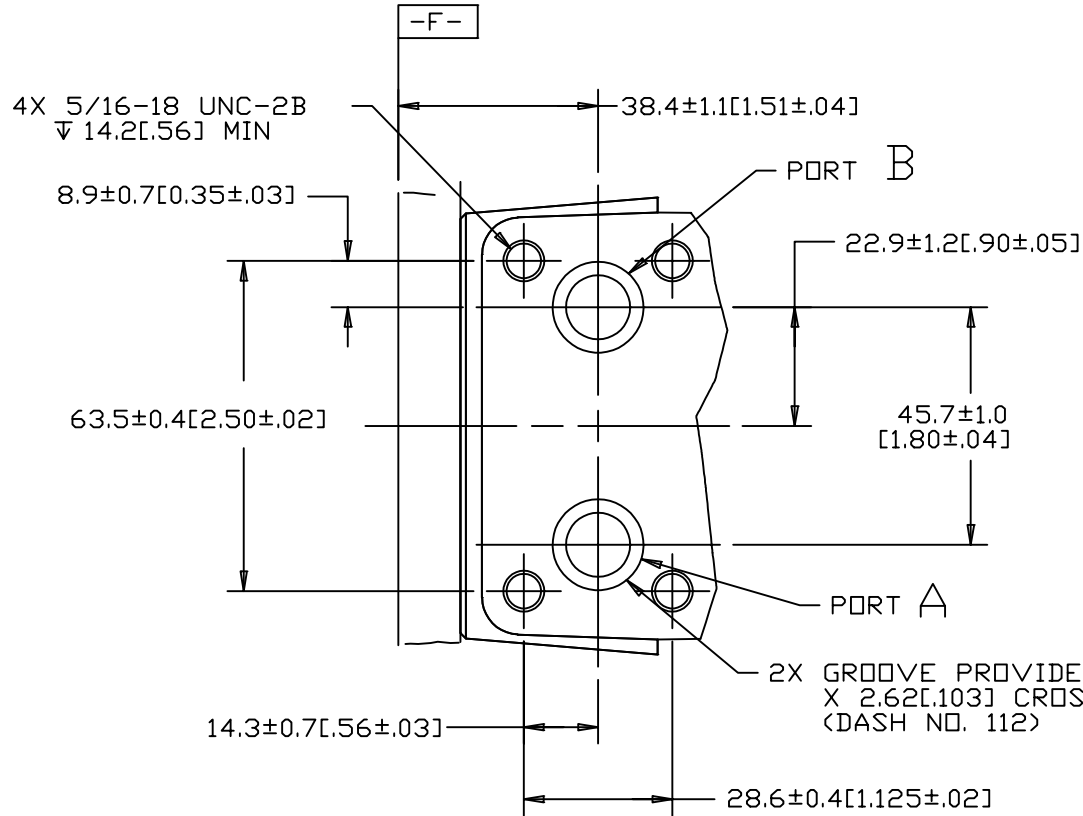


REV	DESCRIPTION	BY	CHK	DATE	ECN / MPS
A	ENGINEERING RELEASE	RAF		2/22/93	23664
D	REVISED	SSD		5/26/10	M79220

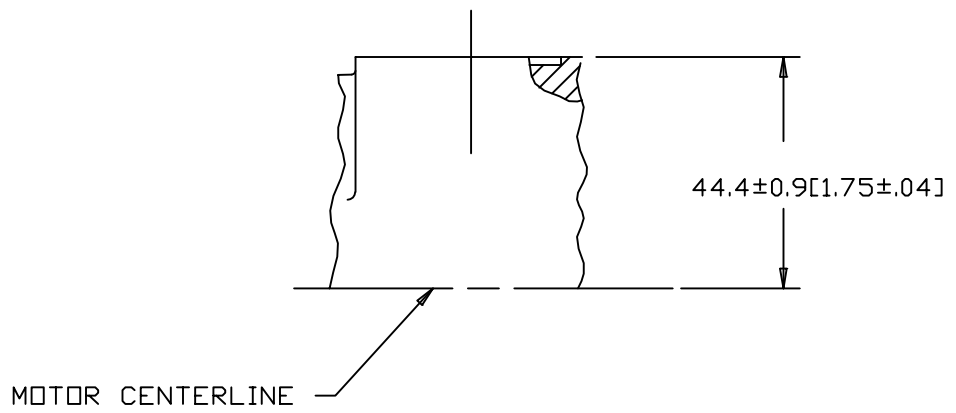


NOTE

- 1 PORT TYPE: OPTION AC
- 2 MOUNTING TYPE: OPTION DD OR CA



REVIEWED FOR CLASSIFICATION OF CHARACTERISTICS PER ESP-042



MOTOR CENTERLINE

UNLESS OTHERWISE SPECIFIED ALL DIMENSIONS ARE IN INCHES <input type="checkbox"/> MILLIMETERS [INCHES] <input checked="" type="checkbox"/>	DRAWING BASED ON ANSI Y14.5M-1982		
	THE REPRODUCTION, DISTRIBUTION, AND UTILIZATION OF THIS DOCUMENT, AS WELL AS THE COMMUNICATION OF ITS CONTENTS TO OTHERS WITHOUT EXPLICIT AUTHORIZATION IS PROHIBITED. OFFENDERS WILL BE HELD LIABLE FOR THE PAYMENT OF DAMAGES. ALL RIGHTS RESERVED IN THE EVENT OF THE GRANT OF A PATENT, UTILITY MODEL, OR DESIGN. (PER ISO 16016)		
TOLERANCES .X ± --- .XX ± --- .XXX ± --- a ± ---°	DRAWN RAF BY/DATE 4-8-93	MATERIAL/HEAT TREAT -	
UNSPECIFIED RADII ARE: -----	CHECKED AGJ BY/DATE 5-25-93	-	
UNSPECIFIED DRAFT ANGLES ARE: -----°	ENGRG RVA BY/DATE 5-25-93	TITLE PORT INSTALLATION	
B SIZE	METALLURGY BY/DATE -----	<input type="checkbox"/> MICRONS <input checked="" type="checkbox"/> MICROMETERS <input checked="" type="checkbox"/> ARITHMETICAL AVERAGE	NUMBER A-110-016
	THIRD ANGLE PROJECTION DO NOT SCALE	SCALE 1/1	SHEET 1 OF 1