

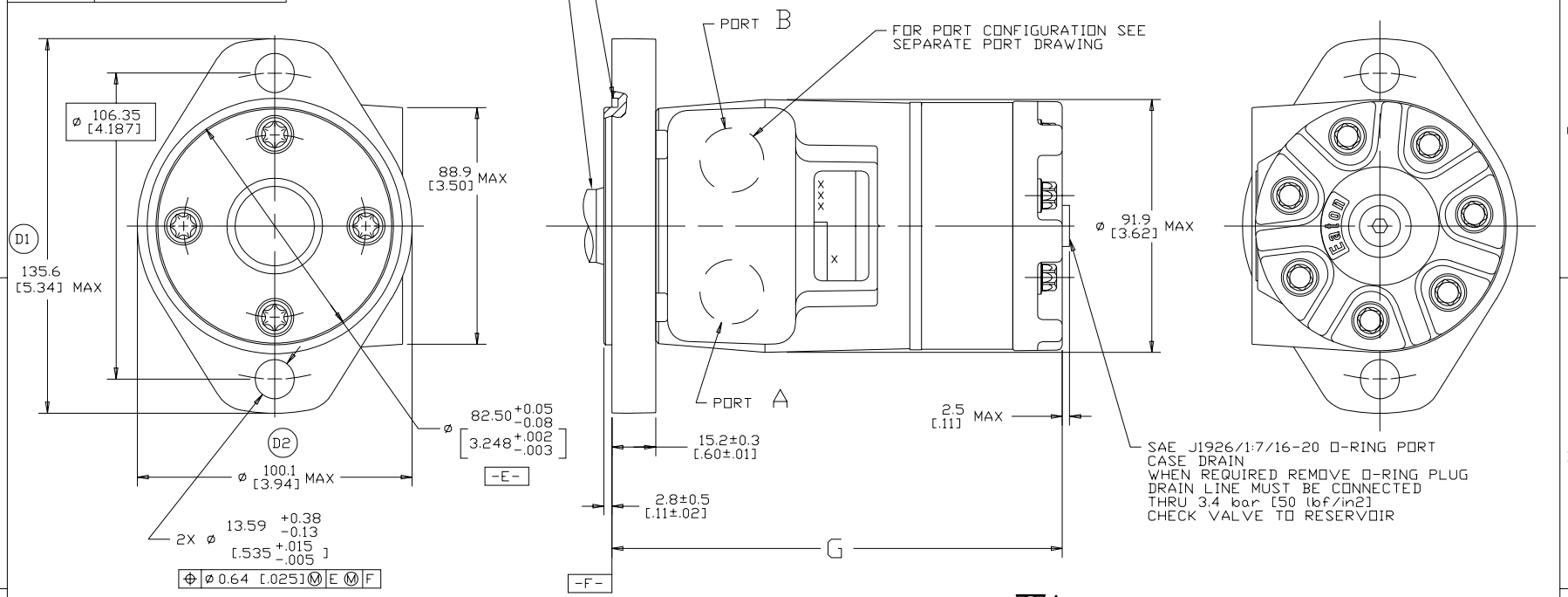
DISPL CODE	G MAX
018	132.2 [5.21]
022	132.2 [5.21]
025	133.1 [5.24]
030	134.6 [5.30]
036	136.4 [5.37]
040	137.6 [5.42]
049	140.2 [5.52]
062	144.2 [5.68]
080	149.6 [5.89]
096	154.4 [6.08]
119	161.2 [6.35]
149	170.2 [6.70]
187	181.6 [7.15]
226	193.3 [7.61]
298	215.0 [8.46]

REV	DESCRIPTION	BY	DATE	ECN
A	ENGINEERING RELEASE	RAF	2-8-94	M11208
B	-1<(3C) 88.9 [3.50] MAX WAS 84.6 [3.33] MAX -2<(2C) Ø 91.9 [3.62] MAX WAS Ø 87.9 [3.46] MAX -3<(2B) ADDED "G" DIMENSION	JMM	10-26-94	26147
C	(4B)Ø13.59+0.38/-0.13 [5.35+.015/-0.005] WAS Ø13.59±0.13 [5.35±0.005]	AGJ	1-28-02	39853
D	-1<(4C) WAS 131.4 [5.17] MAX. -2<(4B) WAS 96.8 [3.81] MAX.	AAK	04-07-04	46856
E	-1<(4D)UPDATED TABLE FOR DISPL CODE -2<(4A)NOTE 2 MOUNTING FLANGE WAS "A"	PM	03-27-07	0004355
F	-1<(4D)UPDATED TABLE FOR DISPL CODE -2<(4C)135.6[5.34] MAX WAS 133.9[5.27]MAX -3<(4B)Ø100.1[3.94]MAX WAS Ø98.3[3.87] MAX -4<(1B)PORT CALLOUT WAS 7/16-20 UNF-2B O-RING PDRT, SIZE 4.....	AAB	04-11-11	M81825
G	(4A)NOTE 3 WAS CASE DRAIN: 1....	SSP	12-26-15	006868.1

FOR SHAFT CONFIGURATION SEE SEPARATE SHAFT DRAWING

FOR PORT CONFIGURATION SEE SEPARATE PORT DRAWING

SAE J1926/1:7/16-20 O-RING PORT CASE DRAIN WHEN REQUIRED REMOVE O-RING PLUG DRAIN LINE MUST BE CONNECTED THRU 3.4 bar [50 lbf/in²] CHECK VALVE TO RESERVOIR



- NOTE
- ROTATION STANDARD WHEN FACING SHAFT END OF MOTOR SHAFT TO ROTATE CLOCKWISE WHEN PORT "A" IS PRESSURIZED COUNTERCLOCKWISE WHEN PORT "B" IS PRESSURIZED REVERSE WHEN FACING SHAFT END OF MOTOR SHAFT TO ROTATE CLOCKWISE WHEN PORT "B" IS PRESSURIZED COUNTERCLOCKWISE WHEN PORT "A" IS PRESSURIZED
 - MOUNTING FLANGE AA = STANDARD, 2 BOLT: Ø 82.6 [3.25] X 3.0 [0.12] PILOT Ø 13.59 [0.535] HOLES DN Ø 106.2 [4.18] BOLT CIRCLE
 - CASE DRAIN 01 = 7/16-20 (END CAP)

REVIEWED FOR CLASSIFICATION PER ESP-042

UNLESS OTHERWISE SPECIFIED ALL DIMENSIONS ARE IN INCHES		DRAWING BASED ON ANSI Y14.5M-1982	
MILLIMETERS (INCHES)	<input type="checkbox"/>	EATON CORPORATION - CONFIDENTIAL AND PROPRIETARY NOTICE TO PERSONS RECEIVING THIS DRAWING AND / OR TECHNICAL INFORMATION	
TOLERANCES	<input type="checkbox"/>	THIS DOCUMENT INCLUDING THE DRAWING AND INFORMATION CONTAINED HEREIN IS CONFIDENTIAL AND IS THE EXCLUSIVE PROPERTY OF EATON CORPORATION, AND IS HEREBY LOANED AND SUBJECT TO REGAL BY EATON AT ANY TIME BY FACING POSSESSION OF THIS DOCUMENT THE RECIPIENT ACKNOWLEDGES AND AGREES THAT THIS DOCUMENT CANNOT BE COPIED, REPRODUCED, OR USED IN ANY MANNER ADVISED TO THE INTERESTS OF EATON, AND THAT NO PORTION OF THIS DOCUMENT MAY BE COPIED OR OTHERWISE REPRODUCED WITHOUT THE PRIOR WRITTEN CONSENT OF EATON. IN THE CASE OF CONFLICTING CONTRACTUAL PROVISIONS, THIS NOTICE SHALL GOVERN. COPYRIGHT 2008 EATON CORPORATION. ALL RIGHTS RESERVED. USA	
.X ±	---	DRAWN BY/DATE	RAF 2/4/94
.XX ±	---	CHECKED BY/DATE	SSP 2/28/94
.XXX ±	---	ENGR BY/DATE	RVA 3/3/94
< ±	+	METALLURGY BY/DATE	---
UNSPECIFIED RADII ARE:	---	MATERIAL/HEAT TREAT	
UNSPECIFIED DRAFT ANGLES ARE:	---	TITLE	
---	---	T MOTOR INSTALLATION	
D SIZE	DO NOT SCALE	NUMBER	A-821-003
		SCALE	1/1 SHEET 1 OF 1