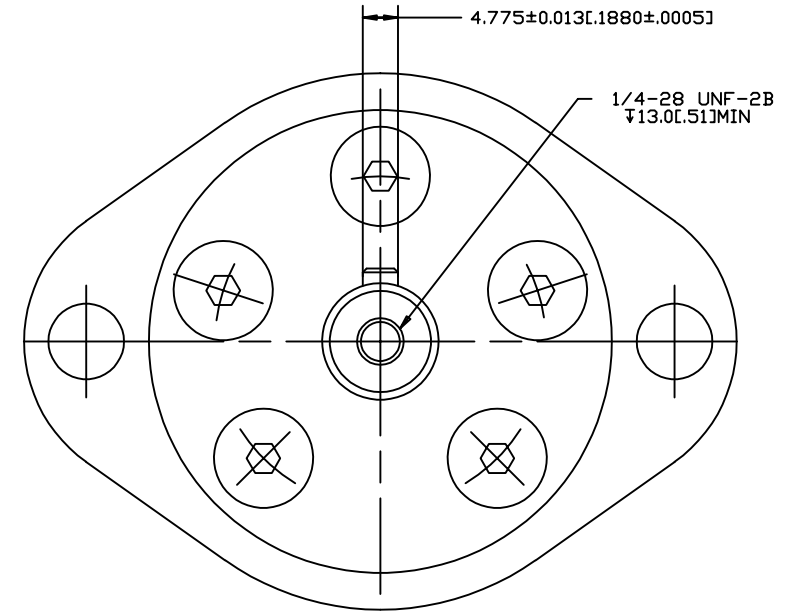
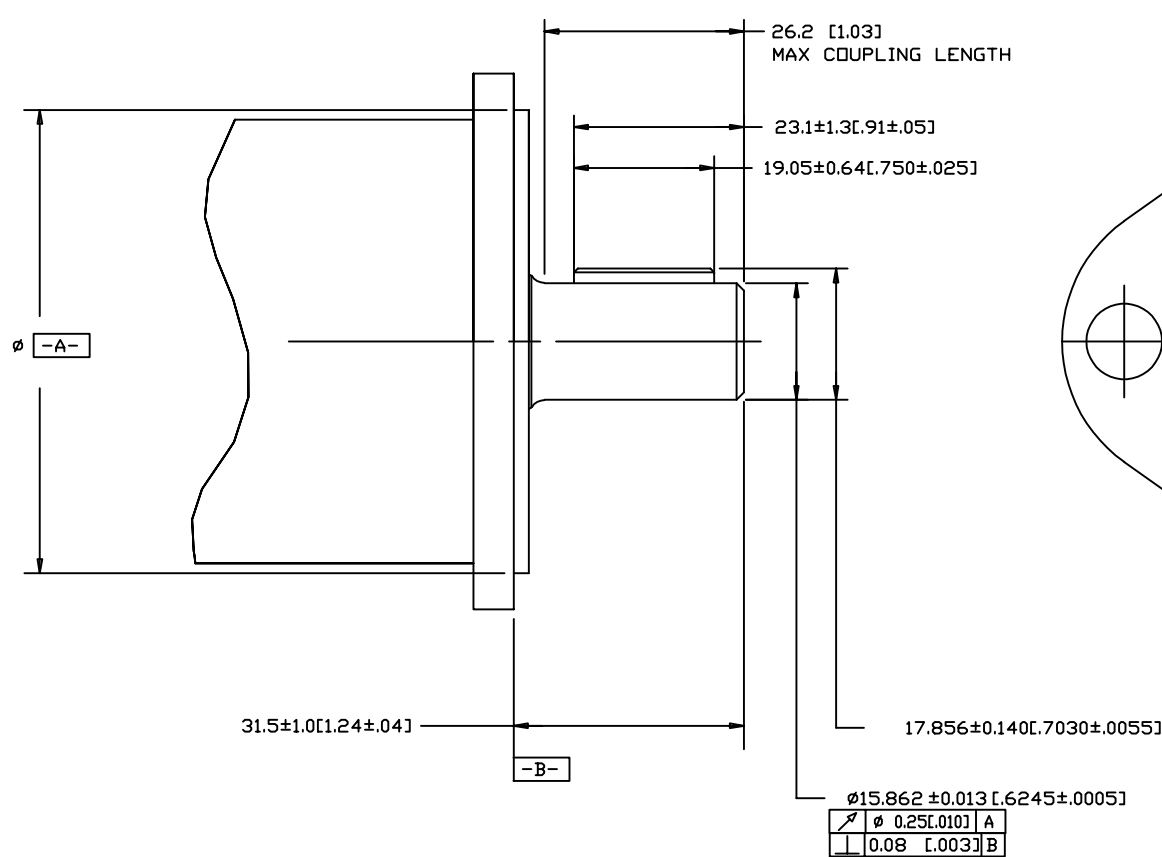


SYM	REVISION	BY	DATE	ECN
A	ENGINEERING RELEASE	JC	7-10-92	17181
B	UPDATED TO CURRENT STANDARD	SSD	7-19-10	M79626



NOTE
 1 OUTPUT SHAFT
 01=Ø15.88[.625]STRAIGHT WITH STRAIGHT
 4.72[.186]SQ KEY WITH 1/4-28 THREADED HOLE

∠	∅ 0.25 [10] A
⊥	0.08 [003] B

REVIEWED FOR CLASSIFICATION PER ESP-042

UNLESS OTHERWISE SPECIFIED ALL DIMENSIONS ARE IN		DRAWING BASED ON ANSI Y14.5M-1982	
INCHES <input type="checkbox"/>		THE REPRODUCTION, DISTRIBUTION, AND UTILIZATION OF THIS DOCUMENT, AS WELL AS THE COMMUNICATION OF ITS CONTENTS TO OTHERS WITHOUT EXPLICIT AUTHORIZATION IS PROHIBITED. OFFENDERS WILL BE HELD LIABLE FOR THE PAYMENT OF DAMAGES. ALL RIGHTS RESERVED IN THE EVENT OF THE GRANT OF A PATENT, UTILITY MODEL, OR DESIGN. (PER ISO 16919)	
MILLIMETERS <input checked="" type="checkbox"/>			
TOLERANCES		Danfoss	
X ± ---		DRAWN BY/DATE JC 7-3-92	MATERIAL/HEAT TREAT
.XX ± ---		CHECKED BY/DATE	
.XXX ± ---		ENG'G BY/DATE	TITLE
<		METALLURGY BY/DATE	SHAFT INSTALLATION J MOTOR
UNSPECIFIED RADI ARE		THIRD ANGLE PROJECTION	NUMBER
UNSPECIFIED DRAFT ANGLES ARE		DO NOT SCALE	A-270-009
C SIZE		MATHEMATICAL AVERAGE	SCALE 2/1 SHEET 1 OF 1