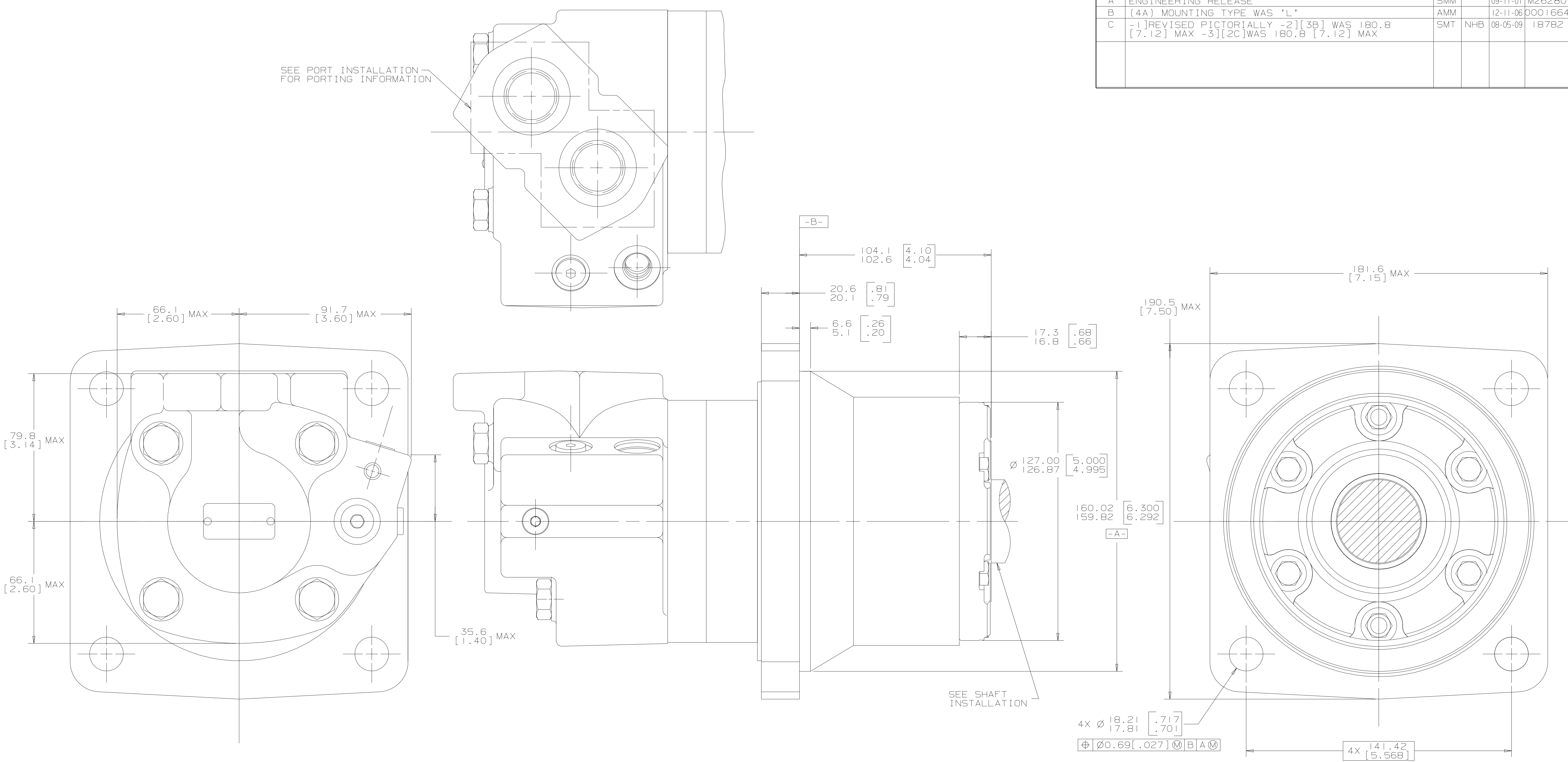


REV	DESCRIPTION	BY	CHK	DATE	ECN
A	ENGINEERING RELEASE	SMM		09-11-01	M26280
B	[4A] MOUNTING TYPE WAS 'L'	AMM		12-11-06	0001664
C	-1]REVISED PICTORIALLY -2][3B] WAS 180.8 [7.12] MAX -3][2C] WAS 180.8 [7.12] MAX	SMT	NHB	08-05-09	18782

SEE PORT INSTALLATION FOR PORTING INFORMATION



SEE SHAFT INSTALLATION

NOTE

- 1 ROTATION
 - STANDARD; WHEN FACING SHAFT END OF MOTOR, SHAFT TO ROTATE: CLOCKWISE WHEN PORT "A" IS PRESSURIZED COUNTERCLOCKWISE WHEN PORT "B" IS PRESSURIZED
 - REVERSE; WHEN FACING SHAFT END OF MOTOR, SHAFT TO ROTATE: COUNTERCLOCKWISE WHEN PORT "B" IS PRESSURIZED CLOCKWISE WHEN PORT "A" IS PRESSURIZED
- 2 MOUNTING TYPE: AL
 - WHEEL, 4 BOLT: 160.0 [6.3] PILOT DIA WITH 5.8 [.23] PILOT LENGTH AND 18.00 [.709] DIA HOLES ON 200.00 [7.874] BOLT CIRCLE (ISO COMPATIBLE)

UNLESS OTHERWISE SPECIFIED ALL DIMENSIONS ARE IN		DRAWING BASED ON ANSI Y14.5M-1982	
INCHES <input type="checkbox"/>	MILLIMETERS <input checked="" type="checkbox"/>	THE REPRODUCTION, DISTRIBUTION, AND UTILIZATION OF THIS DOCUMENT, AS WELL AS THE COMMUNICATION OF ITS CONTENTS TO OTHERS WITHOUT EXPLICIT AUTHORIZATION IS PROHIBITED. OFFENDERS WILL BE HELD LIABLE FOR THE PAYMENT OF DAMAGES. ALL RIGHTS RESERVED IN THE EVENT OF THE GRANT OF A PATENT, UTILITY MODEL, OR DESIGN. (PER ISO 16016)	
TOLERANCES			
.X	----		
.XX	+REF	DRWN BY/DATE SMM 09-28-01	MATERIAL/HEAT TREAT
.XXX	+ONLY	CHECKED BY/DATE AGJ 10-03-01	
<	----	ENGR BY/DATE TRF 10-04-01	TITLE
UNSPECIFIED RADII ARE	----	METALLURGY	6000 SERIES MOTOR INSTALL
UNSPECIFIED DRAFT ANGLES ARE	----	THIRD ANGLE PROJECTION	NUMBER
DRAWING FORMAT CAD <input checked="" type="checkbox"/> MANUAL <input type="checkbox"/>	DO NOT SCALE	ARTHEMATICAL AVERAGE	250/
		SCALE 1/1	SHEET 1 OF 1