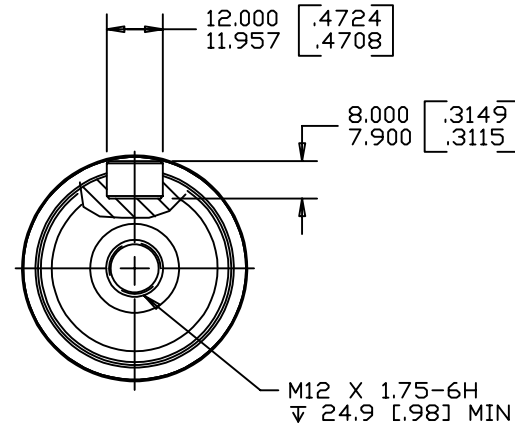
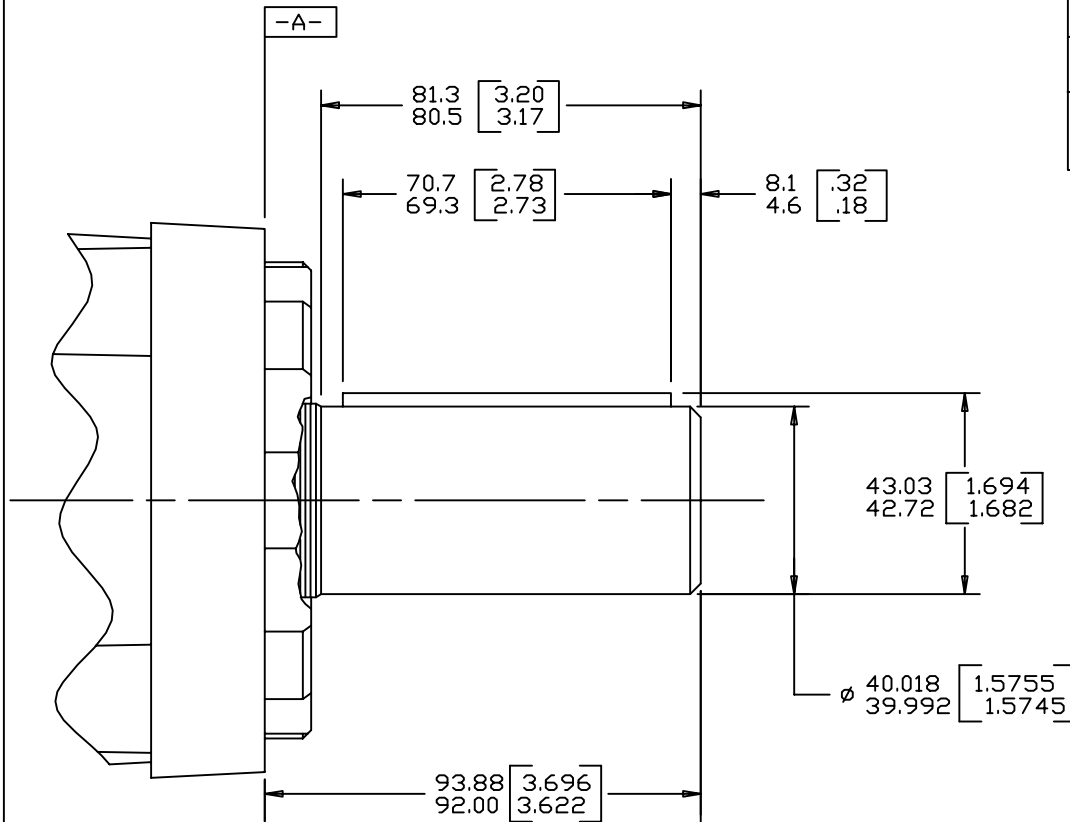


REV	DESCRIPTION	BY	CHK	DATE	ECN
A	RELEASE FOR SAMPLES AND ESTIMATE	WRD		9-08-96	M16059
B	93.88/92.00 [3.696/3.622] WAS 93.4/92.5 [3.678/3.642]	AGJ		5-17-04	47918
C	-1>MOUNTING TYPE WAS "B" -2>OUTPUT SHAFT WAS "14"	SSD		1-24-07	0002527
D	ENGINEERING RELEASE -1>REMOVED 93.4/92.5 [3.678/3.642] -2>8.1/4.6 [.32/.18] WAS 9.2/4.5 [.36/.18]	CSG		04/11/11	M81841_1



REVIEWED FOR CLASSIFICATION PER ESP-042

NOTE

- 1 MOUNTING TYPE: OPTION AB
- 2 OUTPUT SHAFT: OPTION 11

UNLESS OTHERWISE SPECIFIED ALL DIMENSIONS ARE IN INCHES <input type="checkbox"/> MILLIMETERS <input checked="" type="checkbox"/>	DRAWING BASED ON ANSI Y14.5M-1982		
	THE REPRODUCTION, DISTRIBUTION, AND UTILIZATION OF THIS DOCUMENT, AS WELL AS THE COMMUNICATION OF ITS CONTENTS TO OTHERS WITHOUT EXPLICIT AUTHORIZATION IS PROHIBITED. OFFENDERS WILL BE HELD LIABLE FOR THE PAYMENT OF DAMAGES. ALL RIGHTS RESERVED IN THE EVENT OF THE GRANT OF A PATENT, UTILITY MODEL, OR DESIGN. (PER ISO 16016)		
TOLERANCES .X ± ---- .XX ± REF .XXX ± ONLY < ± ----	DRAWN BY/DATE WRD 9-10-96 CHECKED BY/DATE RAF 9-10-96 ENGRG BY/DATE MLB 9-17-96 METALLURGY BY/DATE -----	MATERIAL/HEAT TREAT ----- TITLE 4000 SERIES MOTOR SHAFT INSTALLATION	
UNSPECIFIED RADII ARE ----- UNSPECIFIED DRAFT ANGLES ARE -----	 THIRD ANGLE PROJECTION B SIZE DO NOT SCALE	MICROINCHES <input checked="" type="checkbox"/> MICROMETERS <input type="checkbox"/> 250/ ARITHMETICAL AVERAGE	NUMBER A-606-014 SCALE 1/1 SHEET 1 OF 1