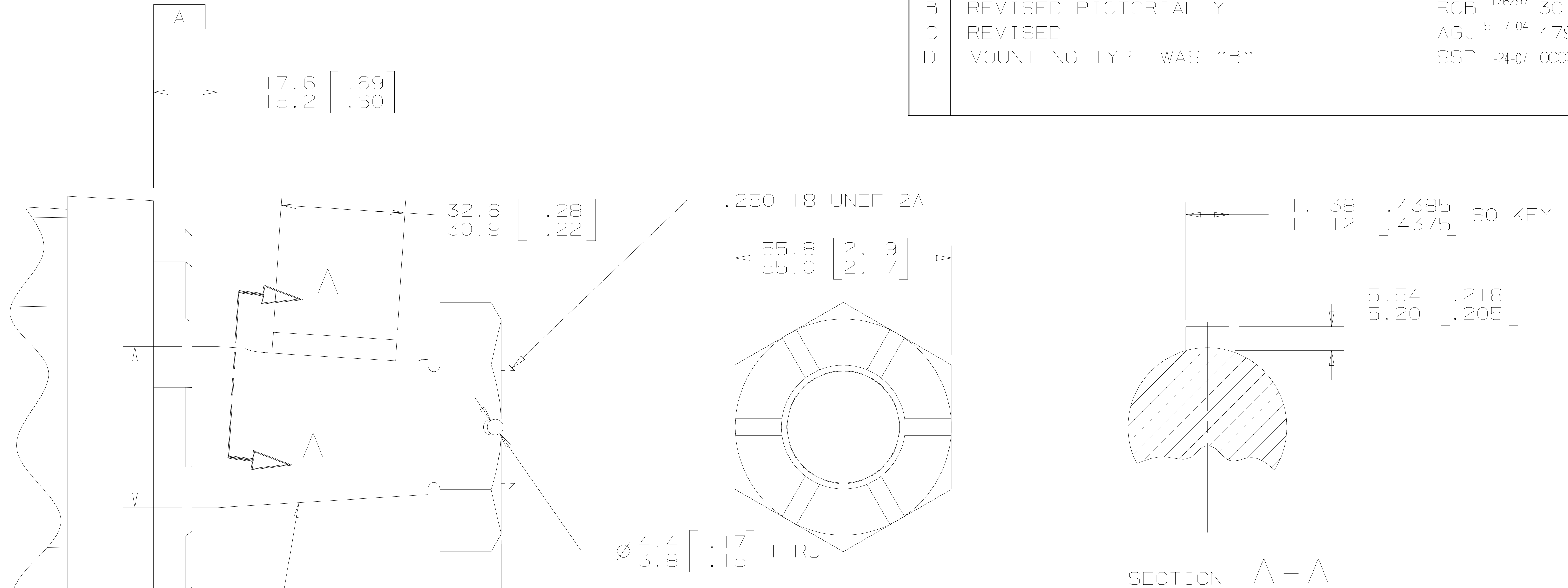


SYM	REVISION	BY	DATE	ECN
A	ENGINEERING RELEASE	SDR	2-8-92	21551
B	REVISED PICTORIALY	RCB	11/6/97	30171
C	REVISED	AGJ	5-17-04	47918
D	MOUNTING TYPE WAS "B"	SSD	1-24-07	0002527



17.6 [.69]
15.2 [.60]

32.6 [1.28]
30.9 [1.22]

55.8 [2.19]
55.0 [2.17]

11.138 [.4385] SQ KEY
11.112 [.4375]

5.54 [.218]
5.20 [.205]

SECTION A-A

16.1 [.63]
15.4 [.61]

84.4 [3.32]
81.2 [3.20]

93.7 [3.69]
91.4 [3.60]

1.498-1.502:12 PER SAE J501
EXCEPT AS SPECIFIED

Ø 4.4 [:17]
3.8 [:15] THRU

NOTE

1 MOUNTING TYPE: OPTION AB

2 OUTPUT SHAFT: OPTION O2

Ø 41.326 [1.6270]
41.275 [1.6250]

UNLESS OTHERWISE SPECIFIED ALL DIMENSIONS ARE IN		DRAWING BASED ON ANSI Y14.5M-1982	
INCHES <input type="checkbox"/>	MILLIMETERS [INCHES] <input checked="" type="checkbox"/>	THE REPRODUCTION, DISTRIBUTION, AND UTILIZATION OF THIS DOCUMENT, AS WELL AS THE COMMUNICATION OF ITS CONTENTS TO OTHERS WITHOUT EXPLICIT AUTHORIZATION IS PROHIBITED. OFFENDERS WILL BE HELD LIABLE FOR THE PAYMENT OF DAMAGES. ALL RIGHTS RESERVED IN THE EVENT OF THE GRANT OF A PATENT, UTILITY MODEL, OR DESIGN. (PER ISO 16016)	
TOLERANCES		DRAWN S. RICHARDS BY/DATE 4/9/92 MATERIAL/HEAT TREAT	
.X	±----		
.XX	±REF	CHECKED K. RANDOLPH BY/DATE 7/8/92 TITLE 4000 SERIES MOTOR SHAFT INSTALLATION	
.XXX	±ONLY		
<	----	ENGRG R. ANDERSON BY/DATE 9/31/92	
UNSPECIFIED RADII ARE		METALLURGY BY/DATE -----	
UNSPECIFIED DRAFT ANGLES ARE		THIRD ANGLE PROJECTION	
DRAWING FORMAT CADD <input checked="" type="checkbox"/> MANUAL <input type="checkbox"/>	DO NOT SCALE	MICROINCHES <input checked="" type="checkbox"/> MICROMETERS [MICROINCHES] <input type="checkbox"/>	NUMBER A-606-002
		ARITHMETICAL AVERAGE <input checked="" type="checkbox"/>	SCALE 1/1 SHEET 1 OF 1

