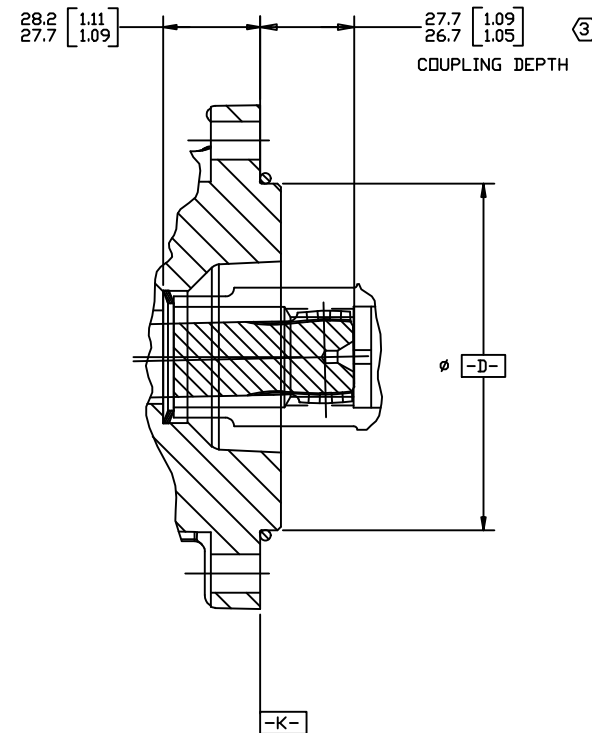
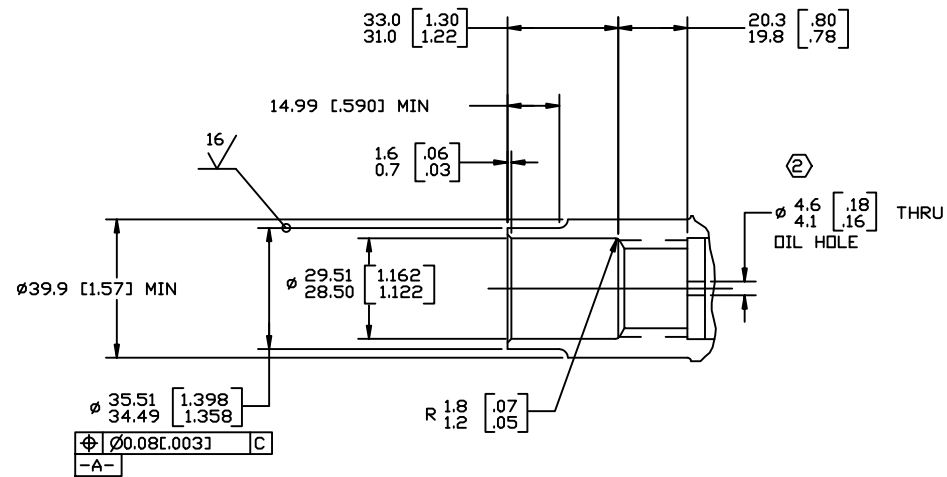


REV	DESCRIPTION	BY	CHK	DATE	ECN
A	ENGINEERING RELEASE	AGJ		2-1-00	M22846
B	REVISED PICTORIALY	AGJ		5-6-03	M30184A
C	(2A) ADDED NOTE (3)	AGJ		9-30-03	45274
D	(7A) DIMENSION BETWEEN TWO PINS-REF. WAS 16.256-17.932[.6400-.7060]	SJT		11-16-20	0126881



INTERNAL INVOLUTE SPLINE DATA	
SPLINE PITCH	12/24
PRESSURE ANGLE	30°
NUMBER OF TEETH	12
CLASS OF FIT - REF.	5
TYPE OF FIT	SIDE
PITCH DIAMETER - REF.	25.400000 [1.0000000] \pm 0.021 [0.008] D
BASE DIAMETER - REF.	21.997045 [0.8660254]
MAJOR DIAMETER	(27.94 [1.100] MAX 27.84 [1.096] MIN)
MINOR DIAMETER	23.000-23.033 [0.9055-.9068]
FORM DIAMETER, MIN.	27.69 [1.090]
FILLET RADIUS	0.20-0.33 [0.008-.013]
TIP RADIUS	0.20-0.33 [0.008-.013]
FINISH	(63)
INVOLUTE PROFILE VARIATION	+0.000 -0.025 [+0.000 -0.010]
TOTAL INDEX VARIATION	0.038 [0.0015]
LEAD VARIATION	0.013 [0.0005]
CIRCULAR SPACE WIDTH	
MAXIMUM ACTUAL	4.328 [1.704]
MINIMUM EFFECTIVE	4.247 [1.672]
MAXIMUM EFFECTIVE - REF.	4.277 [1.684]
MINIMUM ACTUAL - REF.	4.288 [1.688]
DIMENSION BETWEEN TWO PINS - REF.	17.622-17.784[.6938-.7002]
PIN DIAMETER	4.8326-4.8346[.19026-.19034]

INSTALLATION INFORMATION

- INTERNAL SPLINE IN MATING PART TO BE PER SPLINE DATA SPEC MATERIAL TO BE ASTM A304, 8620H VACUUM DEGASSED ALLDY STEEL CARBURIZE TO A HARDNESS OF 59-62 Rc WITH CASE DEPTH TO (50 Rc) 0.76-1.02 [0.030-.040] DIMENSIONS APPLY AFTER HEAT TREAT
- MATING PART TO HAVE CRITICAL DIMENSIONS AS SHOWN OIL HOLES MUST BE PROVIDED AND OPEN FOR PROPER CIRCULATION
- 27.7 [1.09] MAX DIMENSION TO BE MAINTAINED WHEN ASSEMBLING SHIPPING AND INSTALLING UNIT TO INSURE VALVE DRIVE ENGAGEMENT WITH VALVE.

G K S

UNLESS OTHERWISE SPECIFIED ALL DIMENSIONS ARE IN		DRAWING BASED ON ANSI Y14.5M-1982	
INCHES	<input type="checkbox"/>	THE REPRODUCTION, DISTRIBUTION, AND UTILIZATION OF THIS DOCUMENT, AS WELL AS THE COMMUNICATION OF ITS CONTENTS TO OTHERS WITHOUT EXPLICIT AUTHORIZATION IS PROHIBITED. OFFENDERS WILL BE HELD LIABLE FOR THE PAYMENT OF DAMAGES. ALL RIGHTS RESERVED IN THE EVENT OF THE GRANT OF A PATENT, UTILITY MODEL, OR DESIGN. (PER ISO 15911)	
MILLIMETERS	<input checked="" type="checkbox"/>		
TOLERANCES			
X ±	----	DRAWN BY/DATE	AGJ 2-15-00
XX ± REF	----	MATERIAL/HEAT TREAT	
XXX ± ONLY	----	CHECKED BY/DATE	RAF 2-23-00
<	----	ENGRG BY/DATE	TRF 2-24-00
UNSPECIFIED RADII ARE	----	TITLE	2000 SERIES MOTOR COUPLING INSTALLATION
UNSPECIFIED DRAFT ANGLES ARE	----	MATERIAL	
DRAWING FORMAT	<input checked="" type="checkbox"/> MANUAL <input type="checkbox"/>	THIRD ANGLE PROJECTION	<input checked="" type="checkbox"/> DO NOT SCALE
		SCALE	1/1
		SHEET	1 OF 1