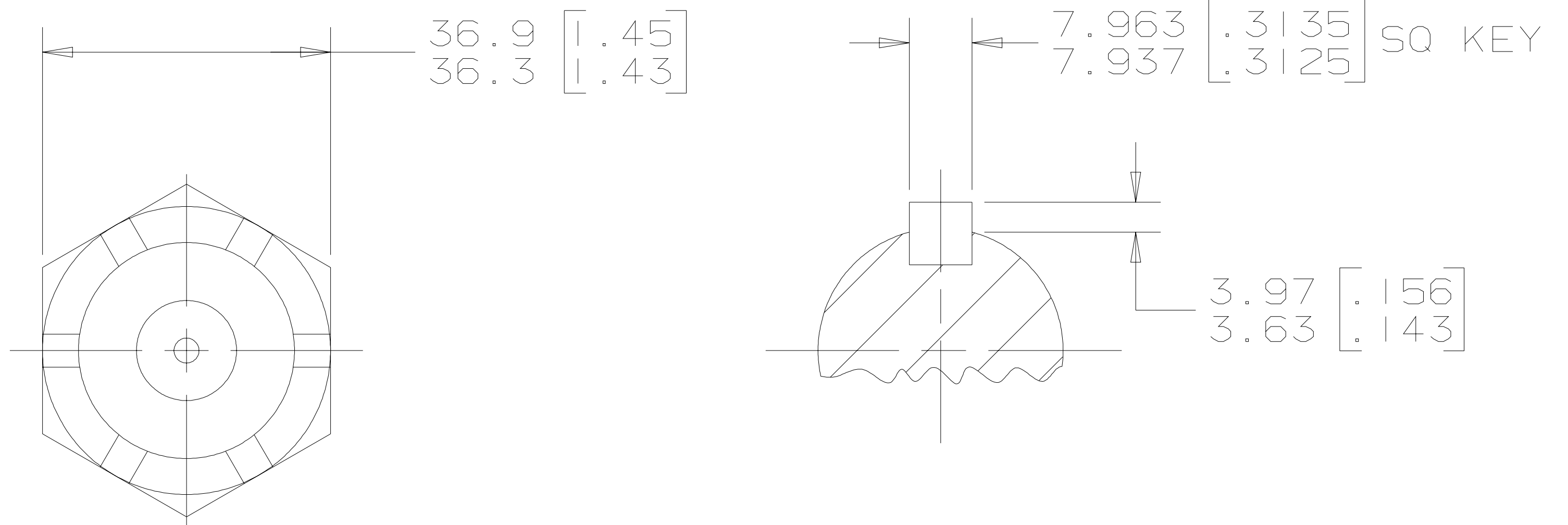
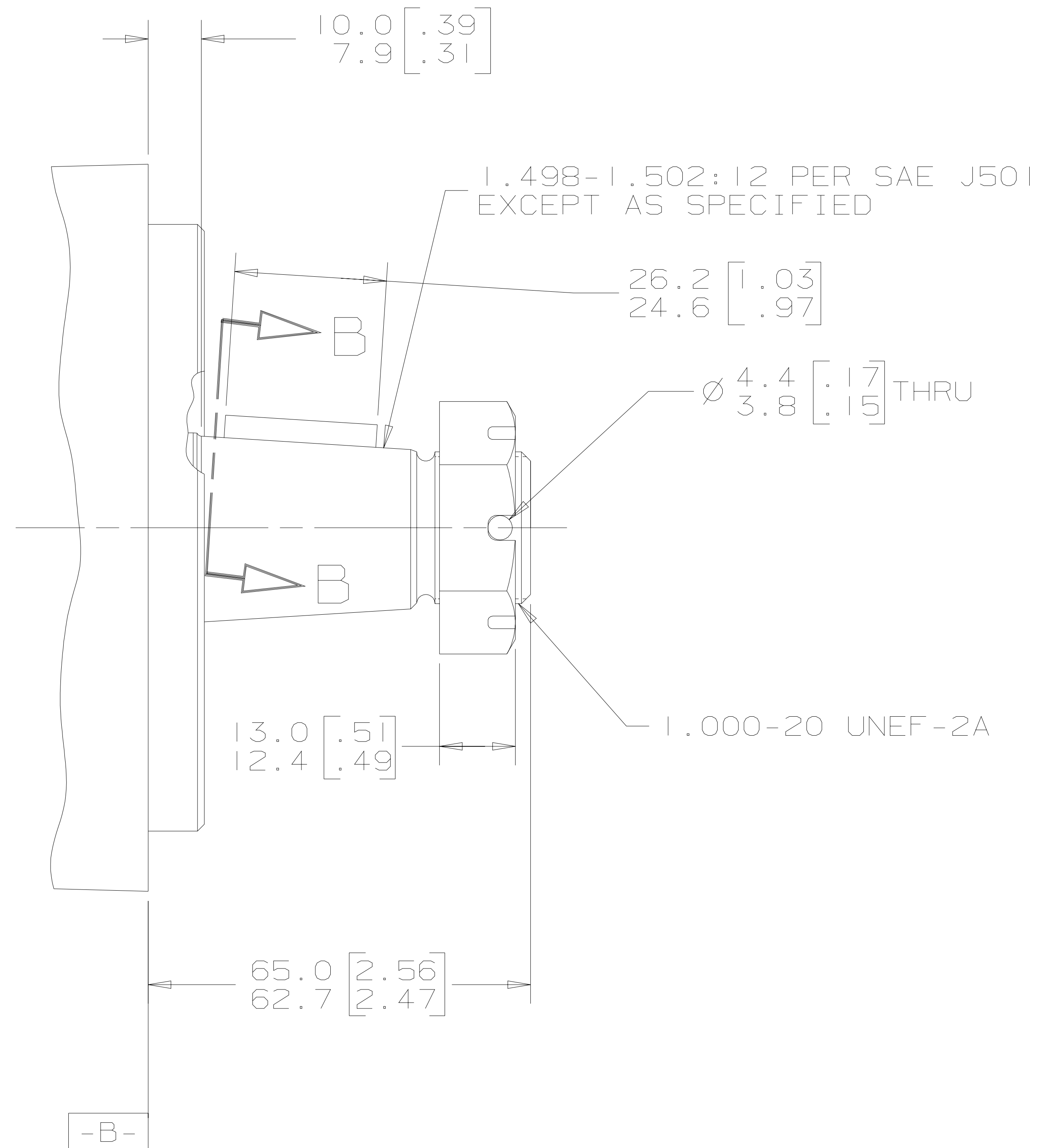


REV	DESCRIPTION	BY	CHK	DATE	ECN
A	ENGINEERING RELEASE	RCB	GCB	3/26/98	M19406
B	NOTE 1 WAS MOUNTING TYPE: OPTION F	AGJ		5-13-02	41044
C	ADDED 10.2/7.6 [.40/.30]	AGJ		8-30-01	39045
D	65.0/62.7 [2.56/2.47] WAS 65.3/62.7 [2.57/2.47]	AGJ		5-17-04	47918
E	NOTE 2 WAS "...OUTPUT SHAFT..."	SKS		3-20-06	M66923
F	REMOVED OUTPUT SHAFT OPTION "44"	AAK		2-01-07	55805
G	10.0/7.9 [.39/.31] WAS 10.2/7.6 [.40/.30]	PRK	SDM	7-08-09	18025



NOTE

- 1 MOUNTING TYPE: OPTION AF
- 2 OUTPUT SHAFT: OPTION O3

UNLESS OTHERWISE SPECIFIED ALL DIMENSIONS ARE IN INCHES <input checked="" type="checkbox"/> MILLIMETERS [INCHES] <input type="checkbox"/>	DRAWING BASED ON ANSI Y14.5M-1982	
	THE REPRODUCTION, DISTRIBUTION, AND UTILIZATION OF THIS DOCUMENT, AS WELL AS THE COMMUNICATION OF ITS CONTENTS TO OTHERS WITHOUT EXPLICIT AUTHORIZATION IS PROHIBITED. OFFENDERS WILL BE HELD LIABLE FOR THE PAYMENT OF DAMAGES. ALL RIGHTS RESERVED IN THE EVENT OF THE GRANT OF A PATENT, UTILITY MODEL, OR DESIGN. (PER ISO 16016)	
TOLERANCES .X ±----- .XX ±----- .XXX ±----- < ±-----	DRAWN R. BERGERSON BY/DATE 3/26/98 CHECKED G. BURAU BY/DATE 3/31/98 ENGRG J. MILLAR BY/DATE 4/2/98 METALLURGY BY/DATE -----	MATERIAL/HEAT TREAT TITLE SHAFT INSTALLATION
UNSPECIFIED RADII ARE -----	MICROINCHES <input checked="" type="checkbox"/> MICROMETERS [MICROINCHES] <input type="checkbox"/> 250/ ARITHMETICAL AVERAGE	NUMBER A-685-027 SCALE 1/1 SHEET 1 OF 1
UNSPECIFIED DRAFT ANGLES ARE -----	THIRD ANGLE PROJECTION DO NOT SCALE	
DRAWING FORMAT CADD <input checked="" type="checkbox"/> MANUAL <input type="checkbox"/>		

