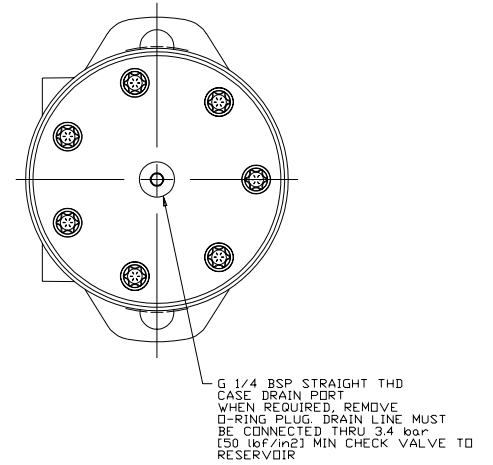
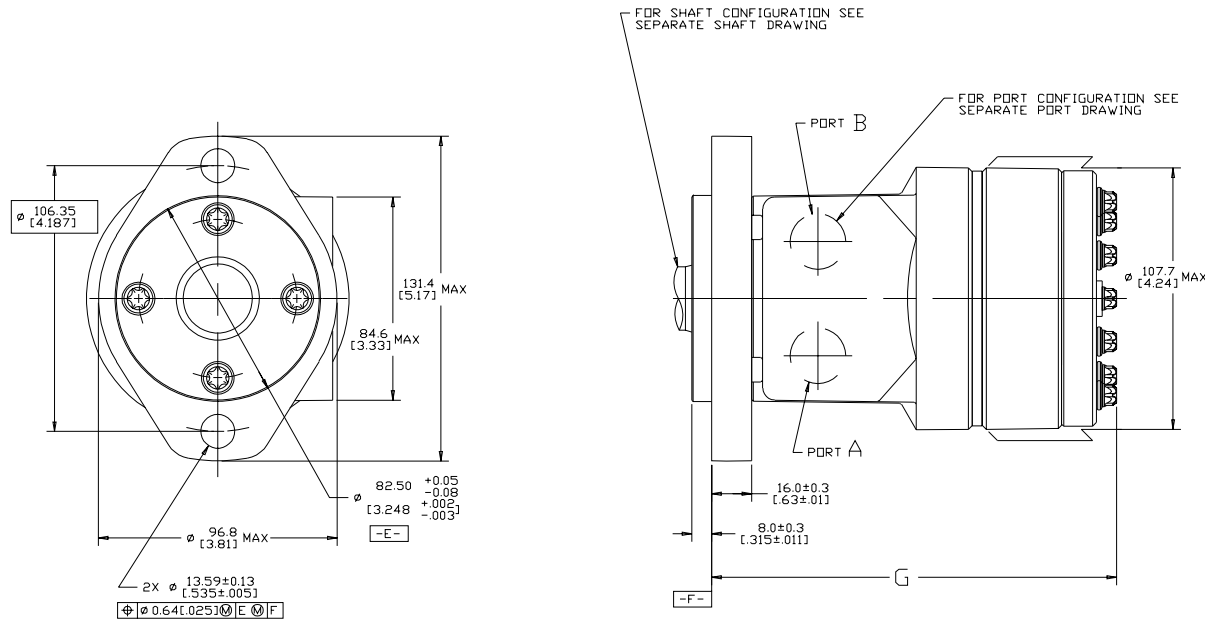


DISP. CODE	G	MAX
036	138.8	[5.46]
046	141.1	[5.55]
057	143.3	[5.64]
073	146.8	[5.78]
088	149.9	[5.90]
101	152.6	[6.01]
114	155.3	[6.11]
137	160.1	[6.30]
182	169.8	[6.68]
227	179.1	[7.05]

REV	DESCRIPTION	BY	CHK	DATE	ECN
A	ENGINEERING RELEASE	SMM		06-09-04	48257
B	-1) (8A) NOTE 2 WAS MOUNTING FLANGE : "M" :-....." -2) (8A) NOTE 3 WAS CASE DRAIN : 2...	TTV	CSG	04-08-16	0070053



NOTE

- 1 ROTATION:
STANDARD: WHEN FACING SHAFT END OF MOTOR, SHAFT TO ROTATE CLOCKWISE WHEN PORT "A" IS PRESSURIZED
COUNTERCLOCKWISE WHEN PORT "B" IS PRESSURIZED

REVERSE : WHEN FACING SHAFT END OF MOTOR, SHAFT TO ROTATE COUNTERCLOCKWISE WHEN PORT "B" IS PRESSURIZED
COUNTERCLOCKWISE WHEN PORT "A" IS PRESSURIZED
- 2 MOUNTING FLANGE:
MAIN = 2 BOLT STD. ϕ 82.6 [3.25] X 8.1 [0.32] PILOT,
 ϕ 13.59 [0.535] MOUNTING HOLES ON ϕ 106.2 [4.18] B.C., W/O O-RING GROOVE
- 3 CASE DRAIN:
02 = G 1/4 BSP STRAIGHT THD PORT (END CAP)

REVIEWED FOR CLASSIFICATION PER ESP-042

UNLESS OTHERWISE SPECIFIED, DIMENSIONS ARE IN MILLIMETERS <input checked="" type="checkbox"/> INCHES <input type="checkbox"/>		DRAWING BASED ON ANSI Y14.5M-1982	
TOLERANCES X # ---- XX # ---- XXX # ----		THE REPRODUCTION, DISTRIBUTION AND UTILIZATION OF THIS DOCUMENT AS WELL AS THE COMMUNICATION OF ITS CONTENTS TO OTHERS WITHOUT EXPRESS AUTHORIZATION IS PROHIBITED. OFFENDERS WILL BE HELD LIABLE FOR THE PAYMENT OF DAMAGES. ALL RIGHTS RESERVED IN THE EVENT OF THE GRANT OF A PATENT, UTILITY MODEL, OR DESIGN. (PER ISO 10076)	
UNDESIGNATED RADI ARE --- METALLURGY --- BY/DATE ---		MATERIAL/HEAT TREAT DATE AGJ 07-06-04 TITLE S MOTOR INSTALLATION	
UNDESIGNATED DRAFT ANGLES ARE --- THIRD ANGLE PROJECTION DO NOT SCALE		NUMBER A-1470-212 SCALE 1/1 SHEET 1 OF 1	
DRAWING FORMAT CASE <input checked="" type="checkbox"/> MANUAL <input type="checkbox"/>		METRICAL AVERAGE	

