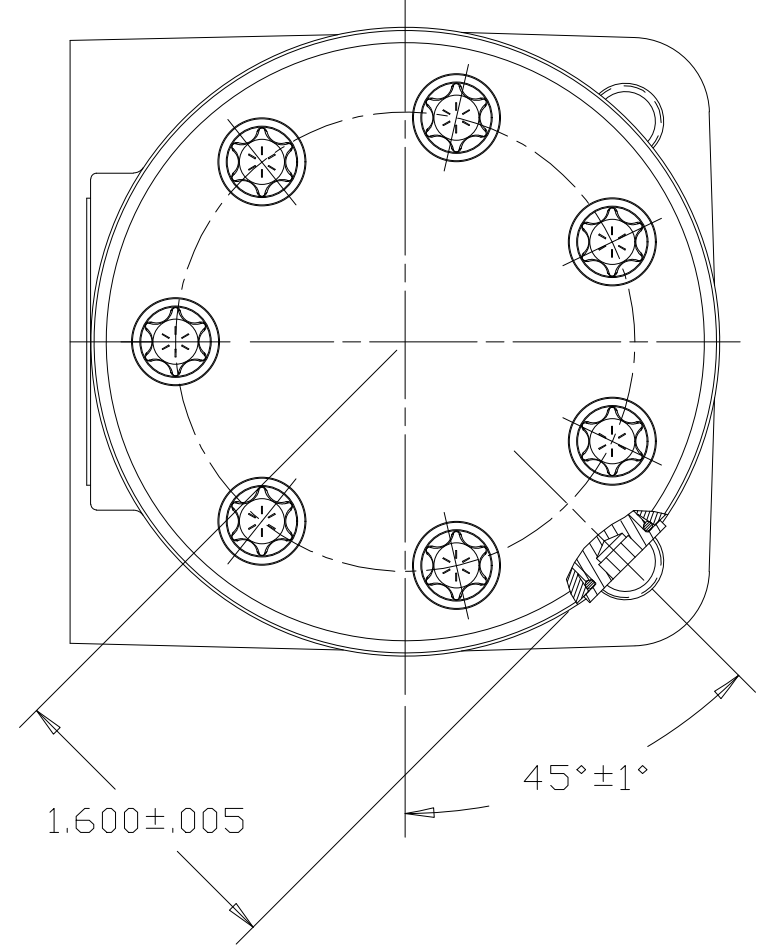
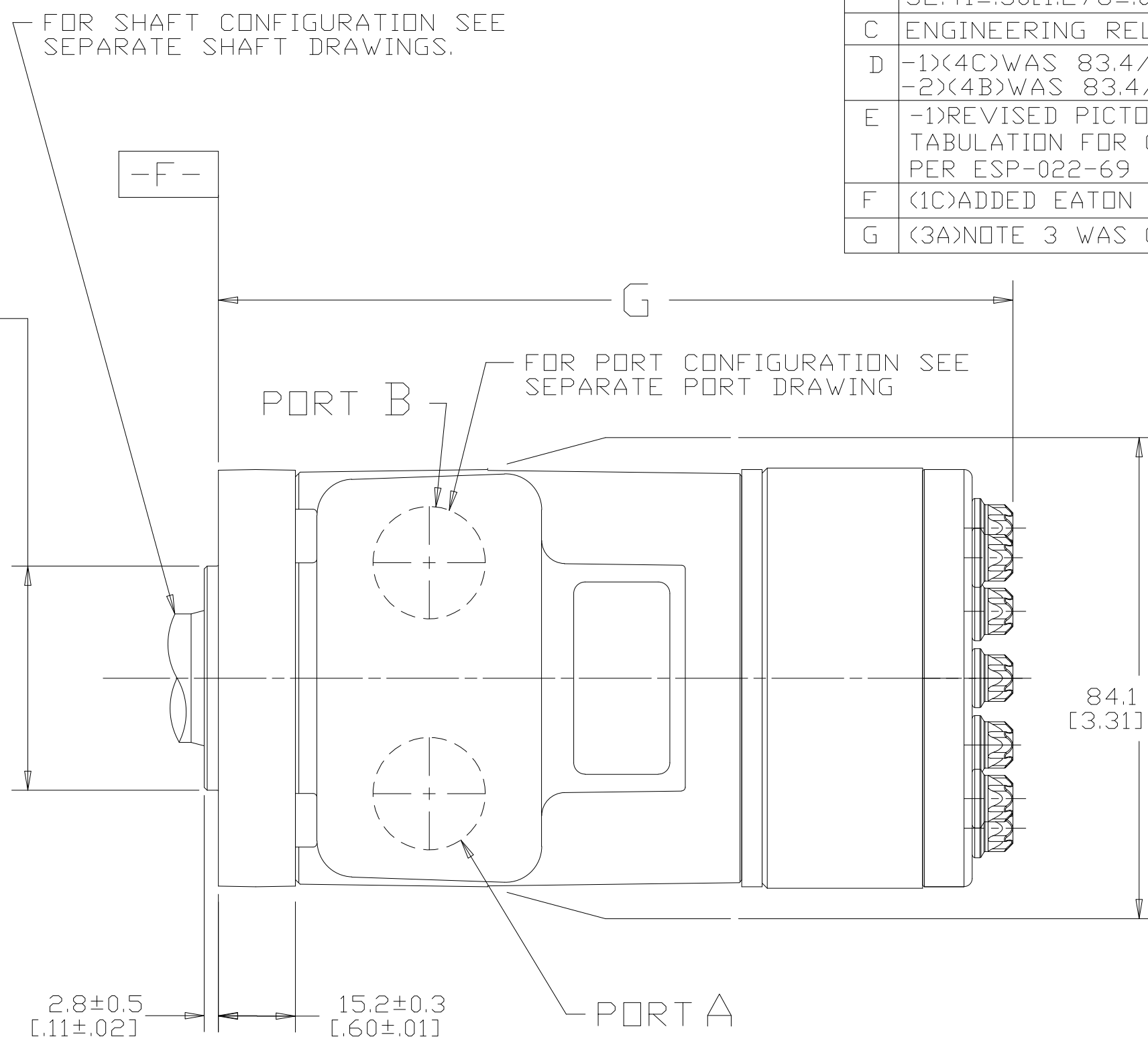
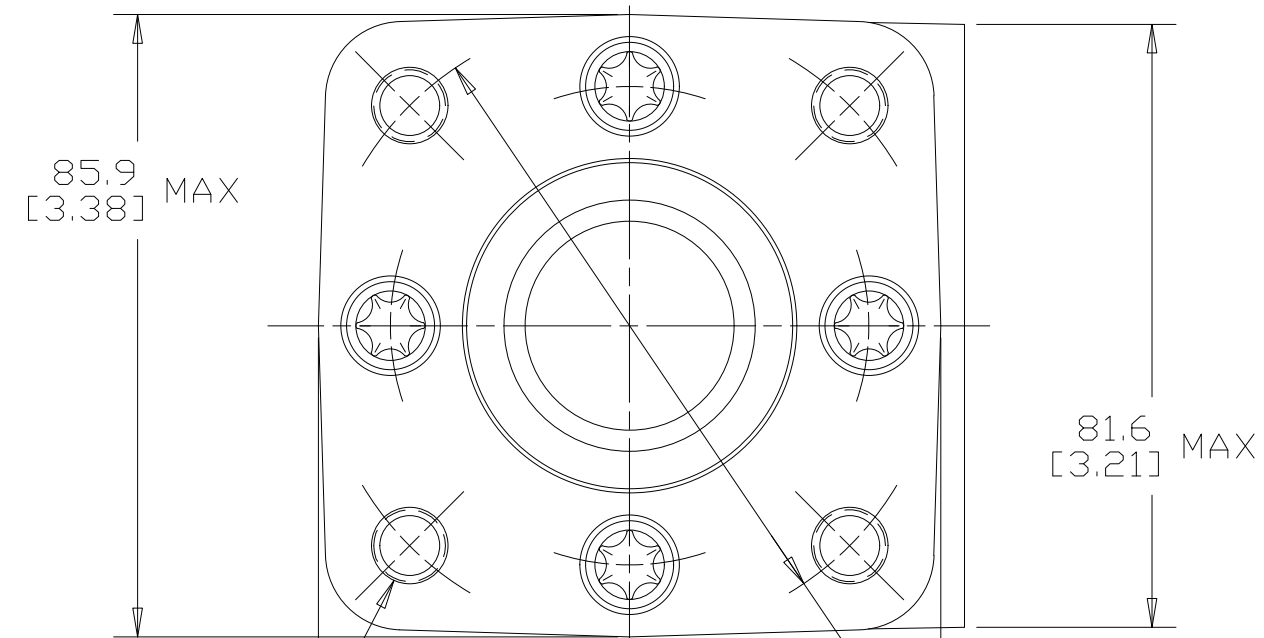


DISPLACEMENT CODE	G MAX
022	132.7 [5.22]
025	133.5 [5.26]
028	132.7 [5.22]
035	136.5 [5.37]
045	136.5 [5.37]
059	139.5 [5.49]
073	142.8 [5.62]
089	146.4 [5.76]
097	148.2 [5.84]
113	151.7 [5.97]
141	158.1 [6.22]
179	166.7 [6.56]
226	177.1 [6.97]
451	228.0 [8.98]

REV	DESCRIPTION	BY	CHK	DATE	ECN
A	RELEASE FOR SAMPLES AND ESTIMATE	RCB		6/17/99	M21560B
B	27.58±0.30[1.086±.012] WAS 32.41±.30[1.276±.012]	RCB		7/15/99	M21560B
C	ENGINEERING RELEASE	MGF		5-1-2000	M23428
D	-1>(4C)WAS 83.4/[3.28] MAX -2>(4B)WAS 83.4/[3.28] MAX	SJP		04-07-04	46856
E	-1>REVISED PICTORIALY -2>(4D)UPDATED TABULATION FOR G MAX -3>REVISED NOTE AS PER ESP-022-69	AAB		02-17-14	0054755
F	(1C)ADDED EATON LOGO TO END CAP	AAB		01-22-15	0061684
G	(3A)NOTE 3 WAS CASE DRAIN: 4 = .4375-20...	YUP		07-27-15	0065202



4X 3/8-16 UNC-2B
 ↓ 14.9/[.59]
 ⌀ 0.34[.013] M F D M
 90°

⌀ 82.55 [3.250]

7/16-20 UNF-2B SAE O-RING PORT CASE DRAIN PER DS-010 WHEN REQUIRED, REMOVE O-RING PLUG. DRAIN LINE MUST BE CONNECTED THRU 3.4 bar [50lbf/in²] MIN CHECK VALVE TO RESERVOIR

NOTE

1 ROTATION
 STANDARD: WHEN FACING SHAFT END OF MOTOR, SHAFT TO ROTATE CLOCKWISE WHEN PORT "A" IS PRESSURIZED. COUNTERCLOCKWISE WHEN PORT "B" IS PRESSURIZED.
 REVERSE: WHEN FACING SHAFT END OF MOTOR, SHAFT TO ROTATE CLOCKWISE WHEN PORT "B" IS PRESSURIZED. COUNTERCLOCKWISE WHEN PORT "A" IS PRESSURIZED.

2 MOUNTING FLANGE
 BA = 4 BOLT STD: 44.40 [1.748] DIA. X 3.05 [.120] PILOT, 3/8-16 MOUNTING HOLES ON ⌀82.55 [3.250] B.C.

3 CASE DRAIN
 04 = .4375-20 UNF-2B SAE O-RING PORT (SIDE OF HOUSING)

CS REVIEWED FOR CLASSIFICATION PER ESP-042

UNLESS OTHERWISE SPECIFIED ALL DIMENSIONS ARE IN INCHES <input type="checkbox"/> MILLIMETERS <input checked="" type="checkbox"/>	DRAWING BASED ON ANSI Y14.5M-1982	
	THE REPRODUCTION, DISTRIBUTION AND UTILIZATION OF THIS DOCUMENT AS WELL AS THE COMMUNICATION OF ITS CONTENTS TO OTHER WITHOUT EXPLICIT AUTHORIZATION IS PROHIBITED. OFFENDERS WILL BE HELD LIABLE FOR THE PAYMENT OF DAMAGES. ALL RIGHT RESERVED IN THE EVENT OF THE GRANT OF A PATENT, UTILITY MODEL OR DESIGN. (PER ISO 16016)	
TOLERANCES .x ± ----- .xx ± ----- .xxx ± ----- < ± -----	DRAWN BY/DATE RCB 6/17/99 CHECKED BY/DATE GCB 7/1/99	MATERIAL/HEAT TREAT
UNSPECIFIED RADII ARE ----- METALLURGY BY/DATE -----	ENGRG BY/DATE RVA 7/2/99	TITLE INSTALLATION
UNSPECIFIED DRAFT ANGLES ARE ----- THIRD ANGLE PROJECTION	DO NOT SCALE	MICROINCHES <input type="checkbox"/> MICROMETERS <input checked="" type="checkbox"/> ARITHMETICAL AVERAGE
DRAWING FORMAT CADD <input checked="" type="checkbox"/> MANUAL <input type="checkbox"/>	NUMBER A-37-427	SCALE 1/1 SHEET 1 OF 1