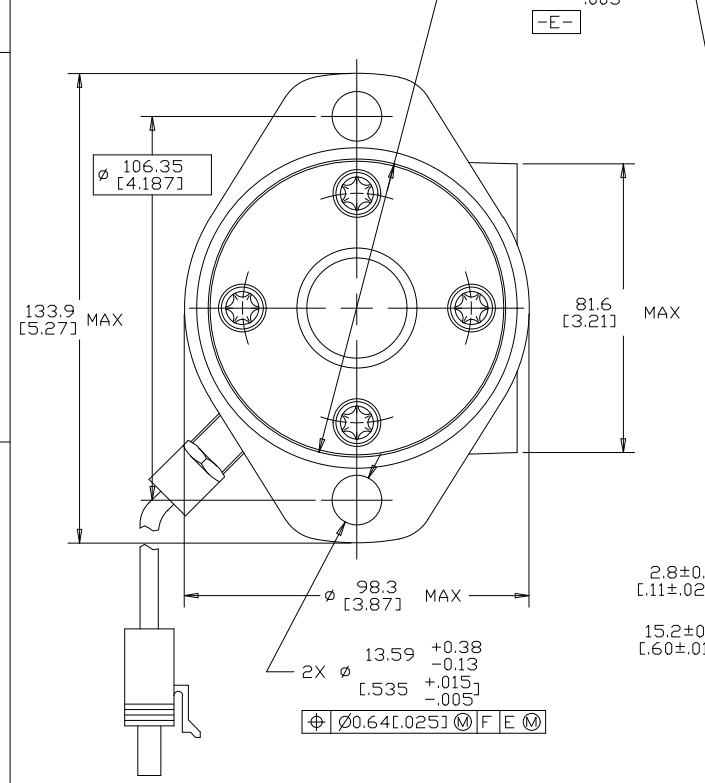


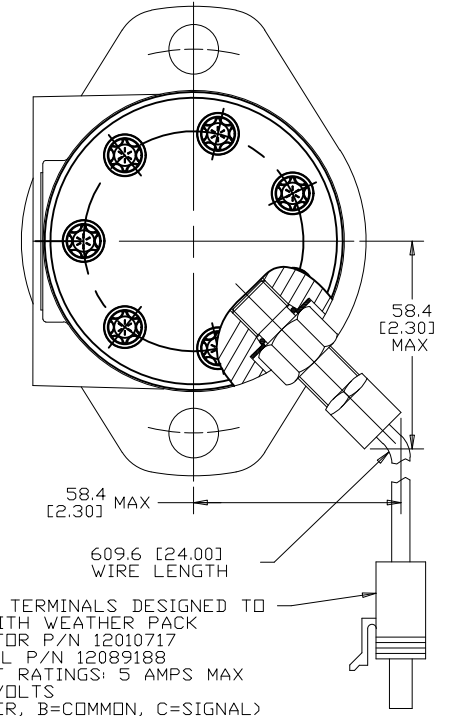
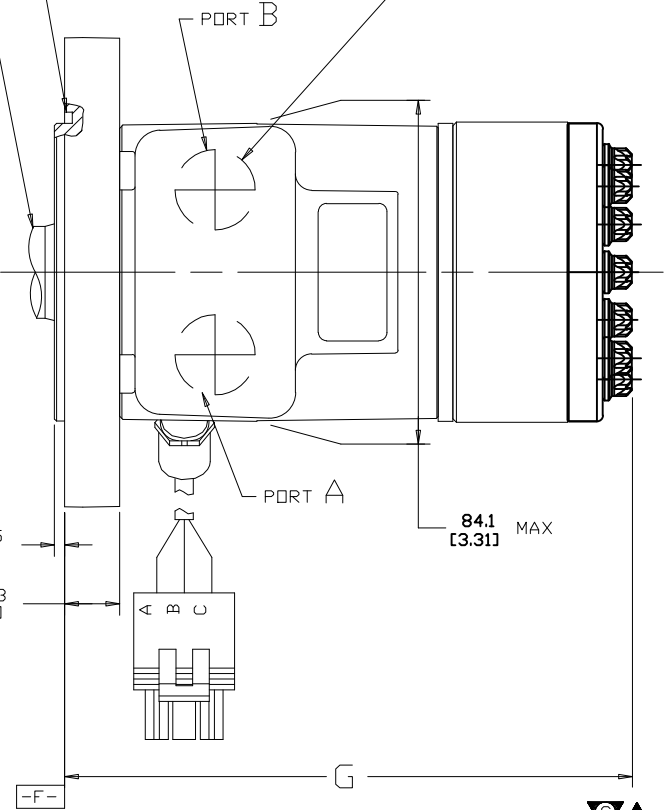
DISPLACEMENT CODE	G MAX	DISPLACEMENT CODE	G MAX
022	132.7 [5.22]	141	158.1 [6.22]
025	133.5 [5.26]	179	166.7 [6.56]
028	132.7 [5.22]	226	177.1 [6.97]
035	136.5 [5.37]	451	228.0 [8.98]
045	136.5 [5.37]		
059	139.5 [5.49]		
073	142.8 [5.62]		
089	146.4 [5.76]		
097	148.2 [5.84]		
113	151.7 [5.97]		



FOR SHAFT CONFIGURATION SEE SEPARATE SHAFT DRAWING

GROOVE PROVIDED FOR 82.6 [3.25] ID X 2.62 [0.103] CROSS SECTION O-RING (DASH NO. 152)

FOR PORT CONFIGURATION SEE SEPARATE PORT DRAWING



REV	DESCRIPTION	BY	CHK	DATE	ECN
A	ENGINEERING RELEASE	RAF		2-16-96	M14958
B	ADDED SENSOR DIMENSIONS	MGF		11-11/97	30385
C	(4B)Ø13.59+0.38/-0.13 [5.35±.015/-0.05] WAS Ø13.59±0.13 [5.35±.005]	AGJ		1-28-02	39853
D	-1>(4C)WAS 131.4/[5.17] MAX -2>(4B)WAS 96.8/[3.81] MAX	SJP		04-07-04	46856
E	-1>REVISED PICTORIALY -2>(4D)UPDATED TABULATION FOR G MAX -3>REVISED NOTE AS PER ESP-022-69	AAB		02-17-14	0054755
F	(1C)ADDED DANFOSSLOGO TO END CAP	AAB		01-22-15	0061684
G	NOTE 3 WAS CASE DRAIN: 0 = NO CASE...	ABH		07-27-15	0065202
H	(1C)REMOVED DANFOSSLOGO	SSD		04-23-21	0131343

- NOTE
- ROTATION: STANDARD: WHEN FACING SHAFT END OF MOTOR, SHAFT TO ROTATE CLOCKWISE WHEN PORT "A" IS PRESSURIZED COUNTERCLOCKWISE WHEN PORT "B" IS PRESSURIZED
REVERSE: WHEN FACING SHAFT END OF MOTOR, SHAFT TO ROTATE CLOCKWISE WHEN PORT "B" IS PRESSURIZED COUNTERCLOCKWISE WHEN PORT "A" IS PRESSURIZED
 - MOUNTING FLANGE: AA = 2 BOLT STD: Ø82.50 [3.248] X 3.05 [1.20] PILOT Ø13.59 [5.35] MOUNTING HOLES ON Ø106.35 [4.187] B.C.
 - CASE DRAIN: 00 = NO CASE DRAIN
 - SENSOR OUTPUT WILL BE 15 ELECTRICAL PULSES PER SHAFT REVOLUTION.
SUPPLY VOLTAGE: 8 TO 28 Vdc
OUTPUT VOLTAGE: LOW .5 Vdc AT 10 mA; HIGH Vs-1 Vdc



REVIEWED FOR CLASSIFICATION PER ESP-042

UNLESS OTHERWISE SPECIFIED ALL DIMENSIONS ARE IN INCHES <input type="checkbox"/> MILLIMETERS <input checked="" type="checkbox"/> (INCHES)		DRAWING BASED ON ANSI Y14.5M-1982	
TOLERANCES		THE REPRODUCTION, DISTRIBUTION, AND UTILIZATION OF THIS DOCUMENT, AS WELL AS THE COMMUNICATION OF ITS CONTENTS TO OTHERS WITHOUT EXPLICIT AUTHORIZATION IS PROHIBITED. OFFENDERS WILL BE HELD LIABLE FOR THE PAYMENT OF DAMAGES. ALL RIGHTS RESERVED IN THE EVENT OF THE GRANT OF A PATENT, UTILITY MODEL, OR DESIGN. (PER ISO 10916)	
.X ± ----	.XX ± REF	DRAWN BY/DATE RAF 2-19-96	MATERIAL/HEAT TREAT
.XXX ± ONLY	≤ ± ----	CHECKED BY/DATE GCB 2-20-96	
UNSPECIFIED RADII ARE	UNSPECIFIED DRAFT ANGLES ARE	ENGR BY/DATE RVA 2-20-96	TITLE
---	---	METALLURGY BY/DATE	H MOTOR INSTALLATION
---	---	THIRD ANGLE PROJECTION	MICROINCHES <input type="checkbox"/> NUMBER <input checked="" type="checkbox"/> MICROMETERS (MICROINCHES)
DRAWING FORMAT CADD <input checked="" type="checkbox"/> MANUAL <input type="checkbox"/>	DO NOT SCALE	ARITHMETICAL AVERAGE	A-37-388
		SCALE 1/1	SHEET 1 OF 1

