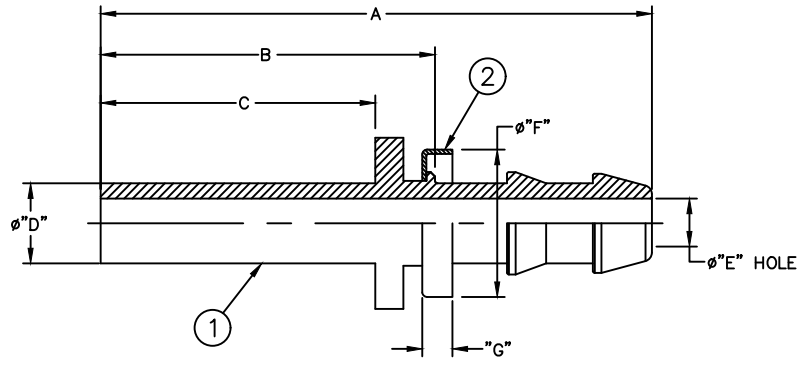


AEROQUIP PART NUMBER	WEATHERHEAD PART NUMBER	A REF	B REF	C REF	D REF	E REF	F ±0.25 [±.010]	G REF
4750-3-4B	10004B-X03	45.7 [1.80]	26.7 [1.05]	22.4 [.88]	4.6 [.18]	3.3 [.13]	17.5 [.689]	4.3 [.17]
4750-4B	10004B-X04	45.7 [1.80]	26.7 [1.05]	22.4 [.88]	6.4 [.25]	4.3 [.17]	17.5 [.689]	4.3 [.17]
4750-5-4B	10004B-X05	47.3 [1.86]	28.2 [1.11]	23.9 [.94]	7.9 [.31]	4.3 [.17]	17.5 [.689]	4.3 [.17]
4750-5B	10005B-X05	51.6 [2.03]	31 [1.22]	21.3 [.84]	7.9 [.31]	6.1 [.24]	18.5 [.730]	4.3 [.17]
4750-6B	10006B-X06	53.3 [2.10]	31.5 [1.24]	26.9 [1.06]	9.4 [.37]	7.6 [.30]	22 [.866]	4.3 [.17]
4750-8B	10008B-X08	60.2 [2.37]	34.5 [1.36]	30.2 [1.19]	12.7 [.50]	9.9 [.39]	24.9 [.980]	4.3 [.17]
4750-10B	10010B-X10	66 [2.60]	26.9 [1.06]	22.4 [.88]	15.7 [.62]	12.2 [.48]	29.4 [1.156]	4.3 [.17]

REVISIONS			
REV	DESCRIPTION	DATE	APPROVED
AL	REDRAWN & REDESIGNED. UPDATED TO DANFOSS FORMAT & DIMENSION STYLE. 1) ADDED PART #4750-5B. 2) ADDED WEATHERHEAD PART NUMBERS.	2013-07-02 VSP	0099207-ECO



4750-10B	10010B-X10	FW1924-1010B	FF91126-10		
4750-8B	10008B-X08	FW1929-0808B	FF91126-8		
4750-6B	10006B-X06	FW1929-0606B	FF91126-6		
4750-5B	10005B-X05	FW1929-0505B	FF91126-5		
4750-5-4B	10004B-X05	FW1929-0504B	FF91126-4		
4750-4B	10004B-X04	FW1929-0404B	FF91126-4		
4750-3-4B	10004B-X03	FW1929-0304B	FF91126-4		
AEROQUIP PART NUMBER	WEATHERHEAD PART NUMBER	① NIPPLE	② HOSE CAP		

LIST OF MATERIALS

ITEM NO.	MATERIAL	DRAWN V. PATIL	CHECKED V. PATIL	APPROVED Y. KULKARNI	RELEASE DATE 2014-07-02	0099207-ECO	THIRD ANGLE PROJECTION	SCALE	DIST	U	CAGE CODE	01276	SHEET	1
1	BRASS													
2	SANTOPRENE-BLUE													

**Danfoss** FLUID CONVEYANCE DIVISION

DRAWING TITLE  
**FITTING ASSEMBLY**  
UNIVERSAL TUBE TYPE  
SOCKETLESS TYPE, 2556 HOSE

SIZE **A2** DRAWING NUMBER **4750-B** REV **AL**

SCALE **NONE** DIST **U** CAGE CODE **01276** SHEET **1**

THE REPRODUCTION, DISTRIBUTION AND UTILIZATION OF THIS DOCUMENT AS WELL AS THE COMMUNICATION OF ITS CONTENTS TO OTHERS WITHOUT EXPLICIT AUTHORIZATION IS PROHIBITED. OFFENDERS WILL BE HELD LIABLE FOR THE PAYMENT OF DAMAGES. ALL RIGHT RESERVED IN THE EVENT OF THE GRANT OF A PATENT, UTILITY MODEL OR DESIGN. (PER ISO 16016)

1. DIMENSIONS ARE IN MILLIMETERS [INCHES].

METRIC