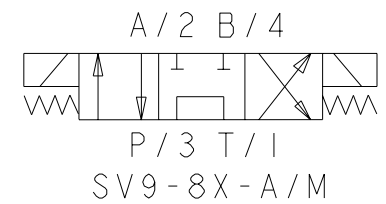
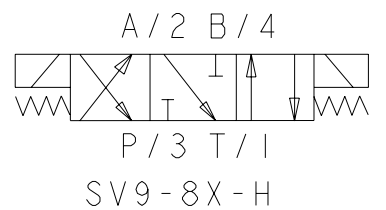
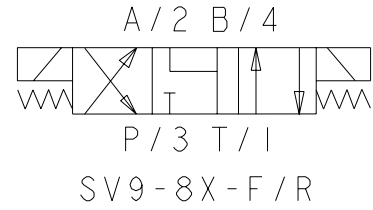
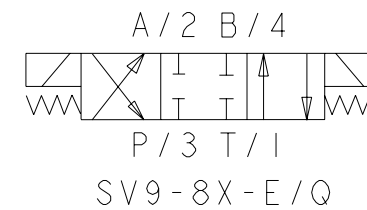
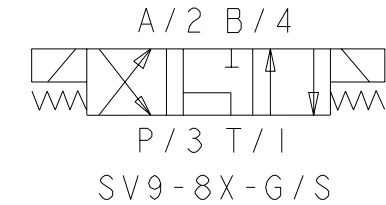
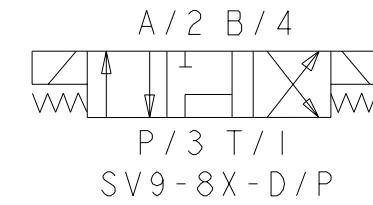
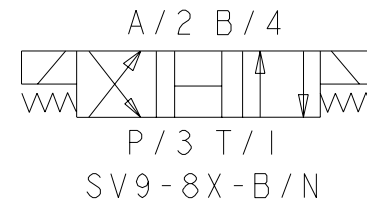
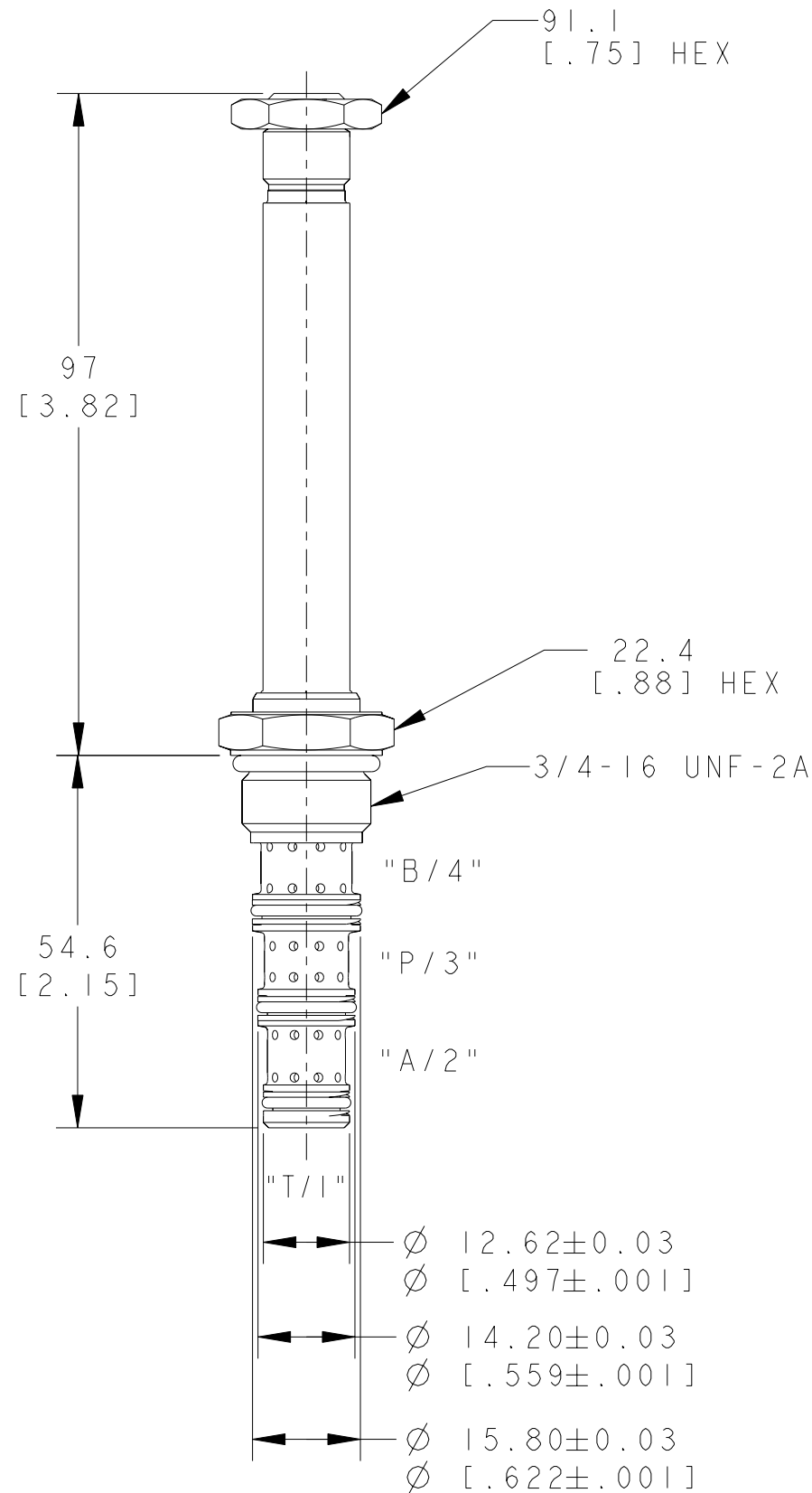


REV	DESCRIPTION	BY	CHK	DATE	ECN / MPS
A	ENGINEERING RELEASE	LMD	JGS	2-12-05	M63978
B	CORRECTED TYPO ERROR	VR	IKK	08-06-11	M82867



NOTE

- USE VALVE CAVITY #C-8-4
- NET WEIGHT:
CARTRIDGE W/COIL: 0.54 kg [1.2 lb]
- TORQUE INTO CAVITY:
ALUMINUM CAVITY: 34-41 N·m [25-30 lbf·ft]
STEEL CAVITY: 34-41 N·m [25-30 lbf·ft]

UNLESS OTHERWISE SPECIFIED ALL DIMENSIONS ARE IN INCHES <input type="checkbox"/> MILLIMETERS (INCHES) <input checked="" type="checkbox"/>	DRAWING BASED ON ANSI Y14.5M-1982	
	THE REPRODUCTION, DISTRIBUTION, AND UTILIZATION OF THIS DOCUMENT, AS WELL AS THE COMMUNICATION OF ITS CONTENTS TO OTHERS WITHOUT EXPLICIT AUTHORIZATION IS PROHIBITED. OFFENDERS WILL BE HELD LIABLE FOR THE PAYMENT OF DAMAGES. ALL RIGHTS RESERVED IN THE EVENT OF THE GRANT OF A PATENT, UTILITY MODEL, OR DESIGN. (PER ISO 16016)	
TOLERANCES	DRAWN LMD BY/DATE 9-1-05	MATERIAL/HEAT TREAT
.X ± ---- .XX ± ---- .XXX ± ---- ∠ ± ----	CHECKED JGS BY/DATE 10-26-05	TITLE
UNSPECIFIED RADII ARE: ----	ENGRG JGS BY/DATE 10-26-05	SOLENOID VALVE INSTALLATION
UNSPECIFIED DRAFT ANGLES ARE: ----	METALLURGY ---- BY/DATE	NUMBER A-2416-105
B SIZE	THIRD ANGLE PROJECTION DO NOT SCALE	SCALE 1/1 SHEET 1 OF 1

